

LUMEN FOCUS FFR 1X8 KIT INSTALL INSTRUCTIONS

CAUTION: THE INSTALLATION AND SERVICING OF THIS PRODUCT SHOULD BE PERFORMED BY A QUALIFIED ELECTRICIAN OR SERVICE PERSONNEL

WARNING - RISK OF FIRE OR ELECTRIC SHOCK. INSTALL THIS KIT ONLY IN LUMINAIRES THAT HAVE THE CONSTRUCTION FEATURES AND / OR DRAWINGS AND WHERE THE INPUT RATING OF THE RETROFIT KIT DOES NOT EXCEED THE INPUT RATING OF THE LUMINAIRE.

WARNING - TO PREVENT WIRING DAMAGE OR ABRASION, DO NOT EXPOSE WIRING TO EDGES OF SHEET METAL OR OTHER SHARP OBJECTS.

WARNING - RISK OF FIRE OR ELECTRIC SHOCK. LUMINAIRE WIRING AND ELECTRICAL PARTS MAY BE DAMAGED WHEN DRILLING FOR INSTALLATION OF LED RETROFIT KIT. CHECK FOR ENCLOSED WIRING AND COMPONENTS.

CAUTION: UNLESS OTHERWISE INDICATED, DO NOT MAKE OR ALTER ANY OPENINGS IN THE COMPARTMENT OF WIRING OR ELECTRICAL DURING INSTALLATION OF THIS RETROFIT ASSEMBLY. PLUG ALL UNUSED OPENINGS IN THE COMPARTMENT OF WIRING OR ELECTRICAL COMPONENTS.

*DO NOT MAKE OR ALTER ANY OPEN HOLES IN AN ENCLOSURE OF WIRING OR ELECTRICAL COMPONENTS DURING KIT INSTALLATION.

WARNING - RISK OF FIRE, ELECTRIC SHOCK, OR PERSONAL INJURY. BEFORE INSTALLATION TURN POWER OFF.

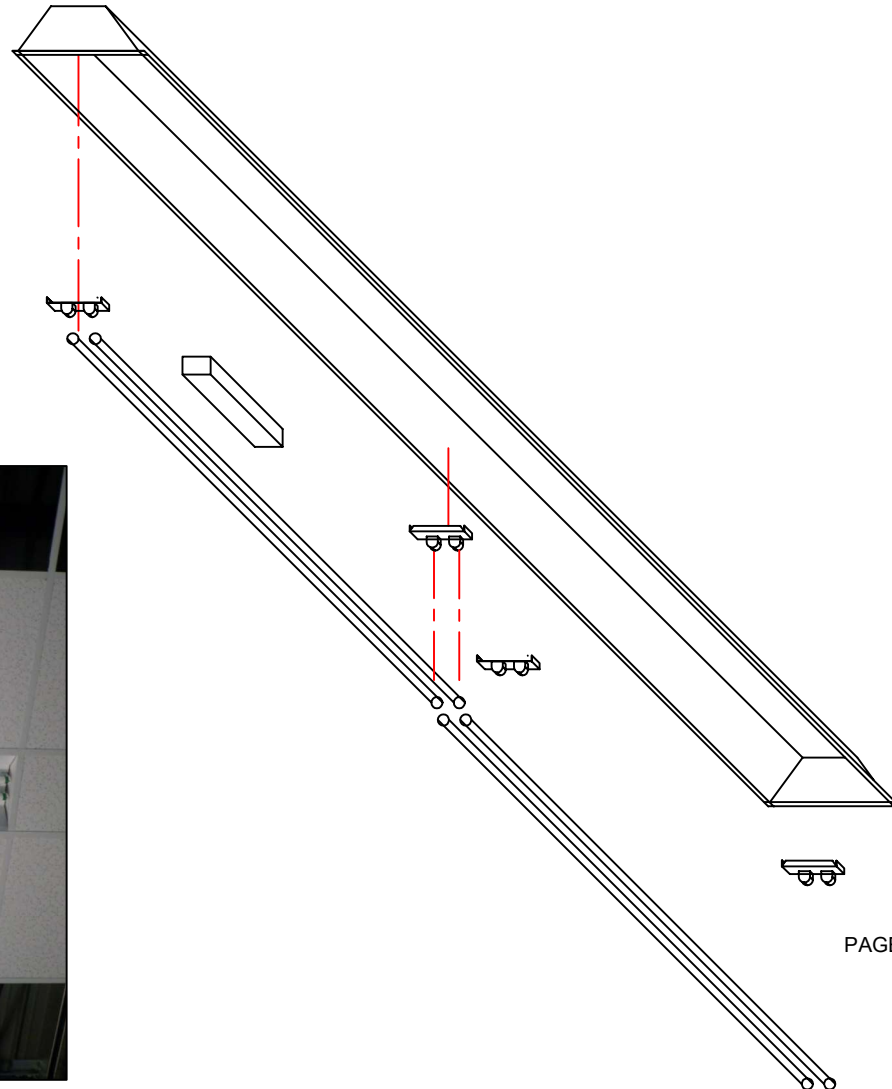
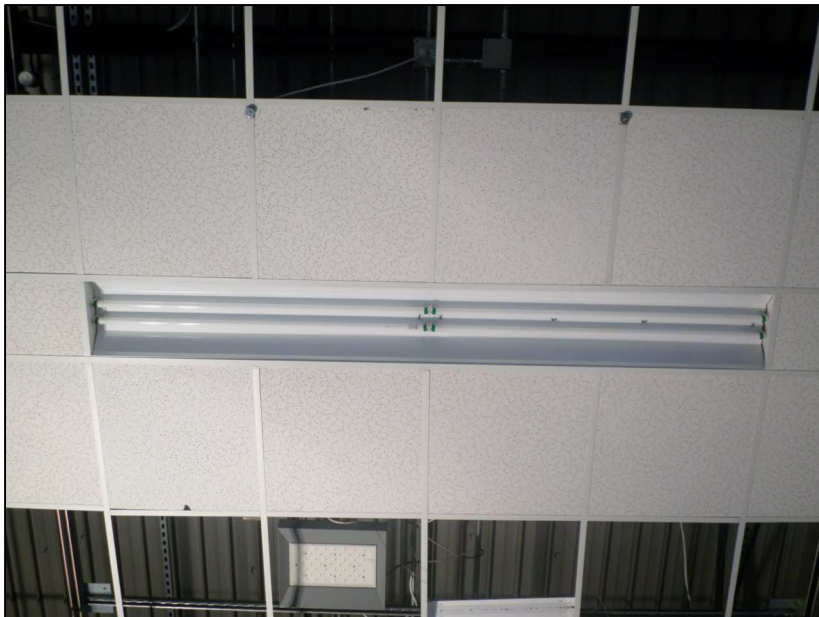
WARNING - RISK OF FIRE OR ELECTRIC SHOCK. LED RETROFIT KIT INSTALLATION REQUIRES KNOWLEDGE OF LUMINAIRES ELECTRICAL SYSTEMS. IF NOT QUALIFIED DO NOT ATTEMPT INSTALLATION. CONTACT A QUALIFIED ELECTRICIAN.

1X8 KIT SHOWN

FIXTURE IN CEILING GRID

REMOVAL PROCESS

1. TURN OFF POWER
2. REMOVE LAMPS(RECYCLE AS NEEDED)
3. REMOVE FLUORESCENT, BALLAST, SOCKETS (IF NEEDED)





PICTURE OF ENDCAP INSTALL SEE FIG 02

LUMEN FOCUS FFR 1X8 KIT INSTALL INSTRUCTIONS

CAUTION: THE INSTALLATION AND SERVICING OF THIS PRODUCT SHOULD BE PERFORMED BY A QUALIFIED ELECTRICIAN OR SERVICE PERSONNEL

WARNING - RISK OF FIRE OR ELECTRIC SHOCK. INSTALL THIS KIT ONLY IN LUMINAIRE THAT HAVE THE CONSTRUCTION FEATURES AND / OR DRAWINGS AND WHERE THE INPUT RATING OF THE RETROFIT KIT DOES NOT EXCEED THE INPUT RATING OF THE LUMINAIRE. WARNING - TO PREVENT WIRING DAMAGE OR ABRASION, DO NOT EXPOSE WIRING TO EDGES OF SHEET METAL OR OTHER SHARP OBJECTS.

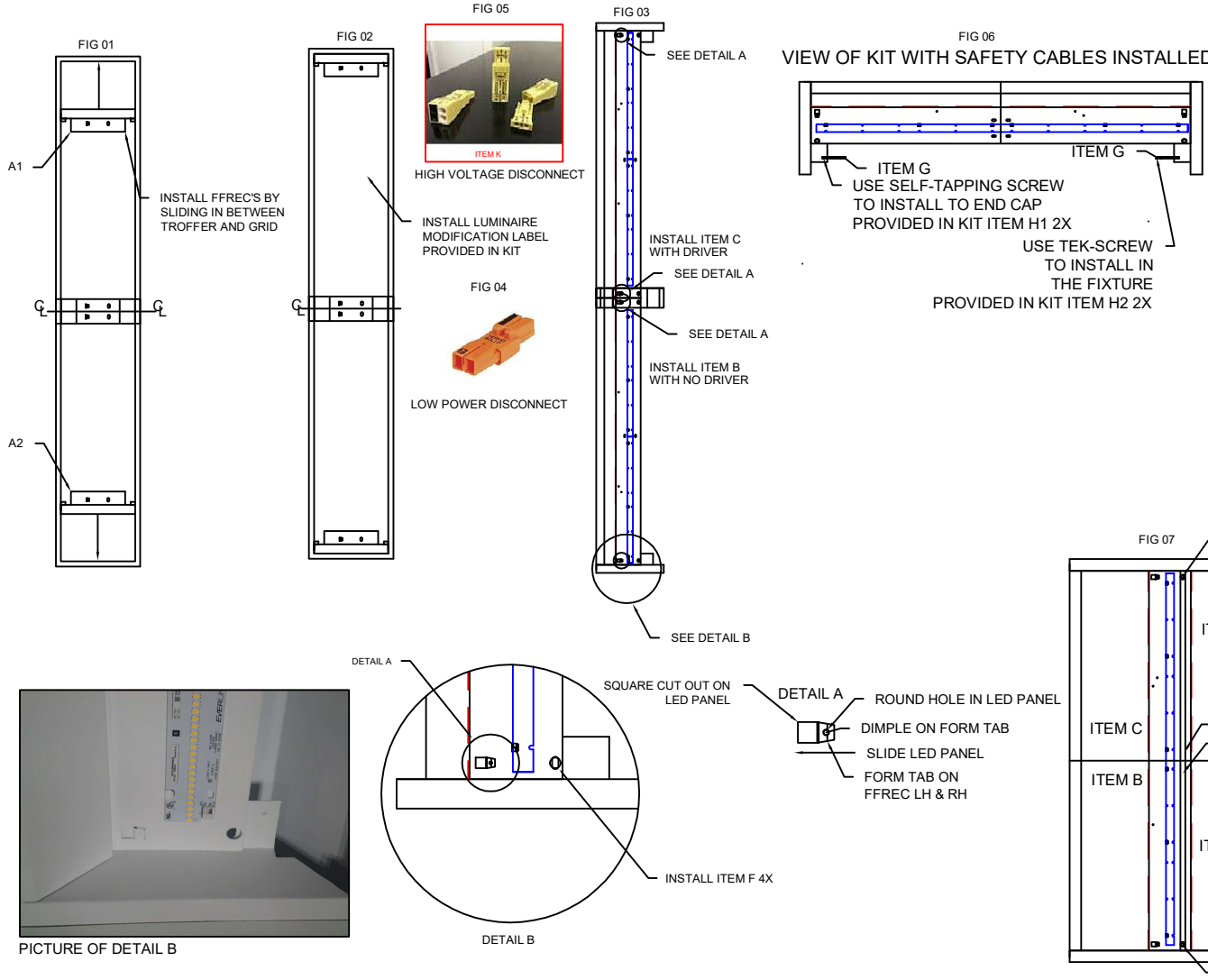
WARNING - RISK OF FIRE OR ELECTRIC SHOCK, LUMINAIRE WIRING AND ELECTRICAL PARTS MAY BE DAMAGED WHEN DRILLING FOR INSTALLATION OF LED RETROFIT KIT. CHECK FOR ENCLOSED WIRING AND COMPONENTS.

CAUTION: UNLESS OTHERWISE INDICATED, DO NOT MAKE OR ALTER ANY OPENINGS IN THE COMPARTMENT OF WIRING OR ELECTRICAL DURING INSTALLATION OF THIS RETROFIT ASSEMBLY. PLUG ALL UNUSED OPENINGS IN THE COMPARTMENT OF WIRING OR ELECTRICAL COMPONENTS.

WARNING - RISK OF FIRE, ELECTRIC SHOCK, OR PERSONAL INJURY. BEFORE INSTALLATION TURN POWER OFF. WARNING - RISK OF FIRE OR ELECTRIC SHOCK, LED RETROFIT KIT INSTALLATION REQUIRES KNOWLEDGE OF LUMINAIRE ELECTRICAL SYSTEMS. IF NOT QUALIFIED DO NOT ATTEMPT INSTALLATION. CONTACT A QUALIFIED ELECTRICIAN.

KIT INCLUDES		
QTY.	PART NUMBER.	ITEM
1	FFR ENDCAP LEFT HAND	A1
1	FFR ENDCAP RIGHT HAND	A2
1	FFR LED PANEL NO DRIVER	B
1	FFR LED PANEL WITH DRIVER	C
1	FFR CENTER MOUNT	D
2	FFR BLANK PANEL	E
4	QUARTER TURNS	F
2	SAFETY STRAPS	G
2	SELF-TAPPING SCREWS	H1
2	TEK-SCREWS	H2
1	LENS	J
1	873-902 DISCONNECT	K

SEE PAGE #3



PICTURE OF DETAIL B

INSTALL INSTRUCTION FOR FFR 1 X 8 RETRO KIT

INSTALLING ITEM A1, A2, AND CENTER MOUNT

1. PLACE FFR ENDCAP ITEM A1 & A2 AT EACH END & CENTER MOUNT IN THE CENTER OF THE FIXTURE BY SLIDING IN BETWEEN TROFFER AND GRID (SEE FIG 01) SLIDE END CAP A1 & A2 AT EACH END OF THE FIXTURE AND SLIDE CENTER MOUNT TO CENTER OF THE FIXTURE (SEE FIG 02)

INSTALL ITEM B (NO DRIVER) ON THE NON-ELECTRICAL END OF THE FIXTURE

2. SLIDE LED PANEL ITEM B BETWEEN GRID AND TROFFER FASTEN USING SQ CUT OUT SEE FIG 03 ON LED PANNEL AND FORMED TAB ON ENDCAP OR CENTERMOUNT SEE DETAL A DIMPLE ON FORM TAB WILL SNAP IN THE HOLE OF THE ITEM B SEE DETAIL A INSTALL ITEM B WITH NO DRIVER FIRST

INSTALL ITEM C ON THE ELECTRICAL END OF THE FIXTURE

3. SLIDE LED PANEL BETWEEN GRID AND TROFFER FASTEN USING SQ CUT OUT ON LED PANNEL AND FORM TAB ON ENDCAP OR CENTERMOUNT SEE DETAL A DIMPLE ON FORM TAB WILL SNAP IN THE HOLE OF THE ITEM C SEE DETAIL A

4. CONNECT LED PANEL LEDS TOGETHER ELECTRICAL WITH PROVIDED DISCONNECT SEE FIG 04
5. CONNECT LED PANEL ELECTRICAL WITH PROVIDED DISCONNECT SEE FIG 05 WHITE (NEUTRAL) TO WHITE, BLACK (POWER FEED) TO BLACK CONNECT GREEN GROUND TO FIXTURE BACK WITH PROVIDED SCREW

INSTALL SAFETY-STRAPS SEE FIG 06

6. INSTALL SAFETY-STRAP AT EACH END OF FIXTURE 1 SELF-TAPPING SCREW USED TO ATTACH STRAP TO ENDCAP CONNECT OTHER END OF SAFETY-STRAP TO FIXTURE USING TEK-SCREW ALL SCREWS ARE PROVIDED IN KIT.

INSTALL ITEM E 2X SEE FIG 07

7. SLIDE BLANK PANEL AT EACH END BETWEEN GRID AND TROFFER FASTEN WITH PROVIDED QUARTER TURNS ITEM F 4X

LUMEN FOCUS FFR 1X8 KIT INSTALL INSTRUCTIONS

CAUTION: THE INSTALLATION AND SERVICING OF THIS PRODUCT SHOULD BE PERFORMED BY A QUALIFIED ELECTRICIAN OR SERVICE PERSONNEL

WARNING - RISK OF FIRE OR ELECTRIC SHOCK. INSTALL THIS KIT ONLY IN LUMINAIRE THAT HAVE THE CONSTRUCTION FEATURES AND / OR DRAWINGS AND WHERE THE INPUT RATING OF THE REROFIT KIT DOES NOT EXCEED THE INPUT RATING OF THE LUMINAIRE.

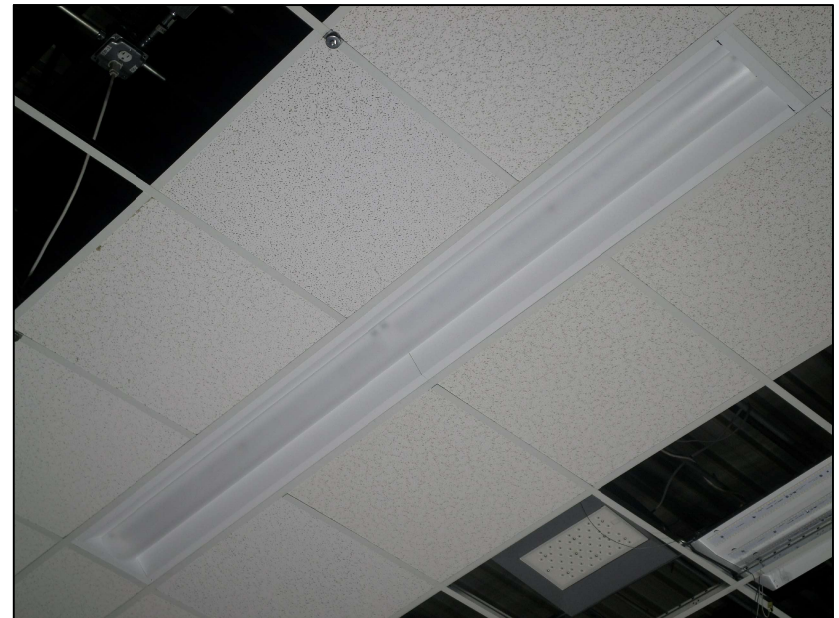
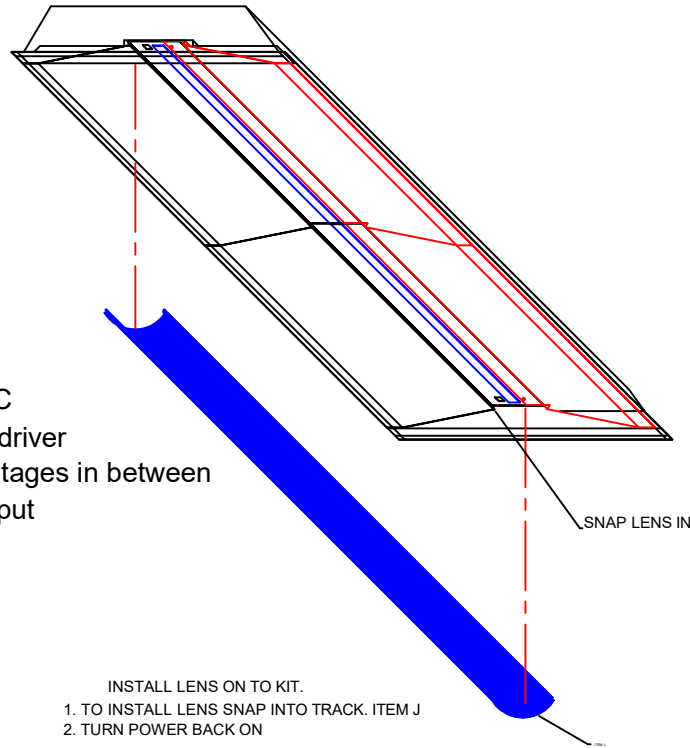
WARNING - TO PREVENT WIRING DAMAGE OR ABRASION, DO NOT EXPOSE WIRING TO EDGES OF SHEET METAL OR OTHER SHARP OBJECTS.

WARNING - RISK OF FIRE OR ELECTRIC SHOCK, LUMINAIRE WIRING AND ELECTRICAL PARTS MAY BE DAMAGED WHEN DRILLING FOR INSTALLATION OF LED RETROFIT KIT. CHECK FOR ENCLOSED WIRING AND COMPONENTS.

CAUTION: UNLESS OTHERWISE INDICATED, DO NOT MAKE OR ALTER ANY OPENINGS IN THE COMPARTMENT OF WIRING OR ELECTRICAL DURING INSTALLATION OF THIS RETROFIT ASSEMBLY. PLUG ALL UNUSED OPENINGS IN THE COMPARTMENT OF WIRING OR ELECTRICAL COMPONENTS.

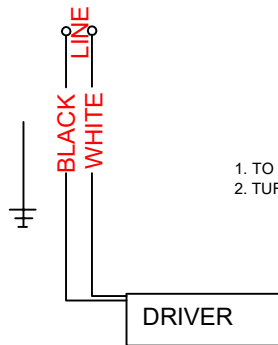
WARNING - RISK OF FIRE, ELECTRIC SHOCK, OR PERSONAL INJURY. BEFORE INSTALLATION TURN POWER OFF.

WARNING - RISK OF FIRE OR ELECTRIC SHOCK, LED RETROFIT KIT INSTALLATION REQUIRES KNOWLEDGE OF LUMINAIRE ELECTRICAL SYSTEMS. IF NOT QUALIFIED DO NOT ATTEMPT INSTALLATION. CONTACT A QULIFIED ELECTRICIAN.



WIRE SCHEMATIC

Line side input to driver
120V to 277V and all voltages in between
120V - 277V input



- INSTALL LENS ON TO KIT.
1. TO INSTALL LENS SNAP INTO TRACK. ITEM J
2. TURN POWER BACK ON