

# LUMEN FOCUS FFRP 18 T8 INSTALL KIT

**WARNING - RISK OF FIRE OR ELECTRIC SHOCK.**  
 INSTALL THIS KIT ONLY IN LUMINAIRES THAT HAVE THE CONSTRUCTION FEATURES AND DIMENSIONS SHOWN IN THE PHOTOGRAPHS AND / OR DRAWINGS AND WHERE THE INPUT RATING OF THE RETROFIT KITS DOES NOT EXCEED THE INPUT RATING OF THE LUMINAIRE.

**WARNING - TO PREVENT WIRING DAMAGE OR ABRASION, DO NOT EXPOSE WIRING TO EDGES OF SHEET METAL OR OTHER SHARP OBJECTS.**

**WARNING - RISK OF FIRE OR ELECTRIC SHOCK.**  
 LUMINAIRE WIRING AND ELECTRICAL PARTS MAY BE DAMAGED WHEN DRILLING FOR INSTALLATION OF LED RETROFIT KIT. CHECK FOR ENCLOSED WIRING AND COMPONENTS.

# INSTALL KIT TO FIT 96" X 9.750" LUMINAIRE

**CAUTION: DO NOT MAKE OR ALTER ANY OPEN HOLES IN THE ENCLOSURE OF WIRING OR ELECTRICAL COMPONENTS DURING KIT INSTALL.**

**WARNING - RISK OF FIRE, ELECTRIC SHOCK, OR PERSONAL INJURY. BEFORE INSTALLATION TURN POWER OFF.**

**WARNING - RISK OF FIRE OR ELECTRIC SHOCK, LED RETROFIT KIT INSTALLATION REQUIRES KNOWLEDGE OF LUMINAIRE ELECTRICAL SYSTEMS. IF NOT QUALIFIED DO NOT ATTEMPT INSTALLATION. CONTACT A QUALIFIED ELECTRICIAN.**

PARTS LIST FOR FFLP18 KIT		
LINE NO.	QTY	PART NAME
01	2	FFRP18WRAPT8
02	2	QUICK DISCONNECT
03	1	LENS
04	11	TEK SCREWS
05	1	WASHER FOR GROUND
06	8	SAFETY KEYS
07	4	UPLIGHT COVERS



STEP 1 TURN OFF POWER  
 REMOVE DOORS  
 FROM LUMINAIRE



STEP 3 REMOVE BALLAST COVERS



STEP 5 HANG THE FFRP18WRAPT8'S  
 USING THE SLOTS THAT WERE USED  
 FOR THE DOOR HINGS OR LATCHES

CONNECT POWER TO THE DRIVER  
 USING QUICK DISCONNECT PROVIDED  
 IN THE KIT.

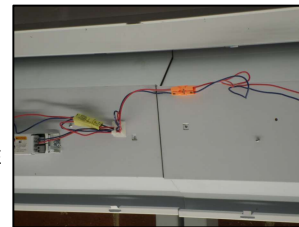
CONNECT TRAYS USING  
 QUICK DISCONNECT PROVIDED IN THE  
 KIT.

INSTALL SAFETY TETHER AT EACH  
 END AND MIDDLE OF THE LUMINAIRE.  
 USING TEK SCREWS SUPPLIED IN THE  
 KIT

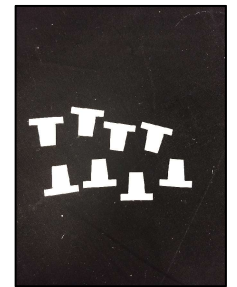
INSTALL GROUND LEAD TO LUMINAIRE  
 USING TEK SCREW AND WASHER



STEP 6 SWING  
 FFRP18WRAPT8S AND SECURE  
 TO THE FIXTURE  
 FITTING THE FFRP18WRAP  
 AROUND THE LUMINAIRE



STEP 7 INSTALL LENS, INSTALL  
 SAFETY KEYS IN THE (8) SLOTS  
 ON THE BACK OF THE  
 FFRP18WRAPT8.  
 TURN POWER BACK ON TO THE  
 LUMINAIRE



SAFETY-KEYS



END VIEW 8' WITH LENS

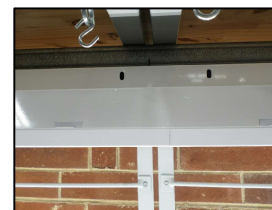


STEP 2 REMOVE LAMPS  
 (RECYCLE LAMPS)



STEP 4 REMOVE BALLAST SOCKET  
 BARS AND ANY WIRING FROM THE  
 LUMINAIRE  
 FOR UP LIGHT LUMINAIRE INSTALL  
 UP LIGHT COVERS (4) 2 FOR EACH  
 SIDE WITH (2) TEK SCREWS PER  
 COVER

MIDDLE OF 8' LUMINAIRE

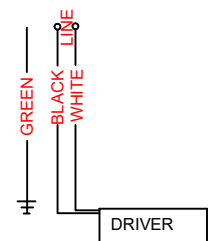


SIDE VIEW OF SAFETY KEYS  
 INSTALLED



SAFETY-KEY INSTALLED

**WIRE SCHEMATIC**  
 Line side input to driver  
 120V to 277V and all voltages in  
 between 120V - 277V input



WHEN INSTALLING KIT  
 MAINTAIN EXISTING GROUND  
 ON THE FIXTURE

