



Project: _____
 Location: _____
 Cat. #: _____
 Type: _____
 Quantity: _____

LED

HZL 1 LED Hazardous Location

Features:

- High performance LED technology
- 0-10V dimming drivers standard
- Class 1, Division 2 Hazardous Location rated
- Available with clear or frosted lens, and with horizontal hood, vertical hood, or no hood
- Suitable for ceiling or wall mounting

Applications:

- Suitable for most interior or exterior Class 1, Division 2 hazardous location applications
- Industrial
 - Manufacturing

Ambient Operating Temp:

- -25°C to 40°C

Predicted L70 Lifetime:

- > 100,000 hrs (calculated)
 - > 60,000 hrs (reported)
- (based on LM-80, TM-21 and in-situ laboratory testing)

Construction:

- Heavy-duty die cast aluminum housing and top frame
- 1/2" tapped coin plug openings for wiring entrance conduits
- Vandal resistant polycarbonate lens available in clear or frosted
- Powdercoat finish over a chromate conversion coating

Certifications:

- ETL listed for Hazardous Locations per UL844
- Class 1, Division 2, Groups A,B,C,D
- T4 Temperature Rating
- IP66

Warranty:

- 5 year limited system warranty
- see www.LumenFocus.com for complete warranty terms and conditions



Ordering Guide:

example: HZL 1 H MD UV CP 840-PT

Series	Length	Hood	Output	Voltage	Shielding	CRI/CCT	-	Mounting	Finish
HZL	1			UV			-		PT
HZL	1	Blank H V	LW MD	UV	CP FP	840 850		Blank AB YK	PT

Length: 1 1'

Hood: Blank None
H Horizontal Hood
V Vertical Hood

Lumen Output: LW Low
MD Medium

Voltage: UV 120-277V

Shielding: CP Clear Polycarbonate
FP Frosted Polycarbonate

CRI/CCT: 840 80 CRI / 4000K
850 80 CRI / 5000K

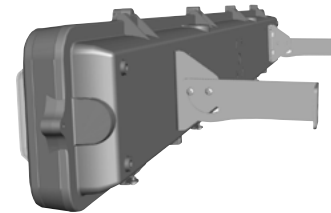
Mounting: Blank None - Surface Mount
AB Adjustable Bracket
YK Yoke Mount

Finish: PT Platinum

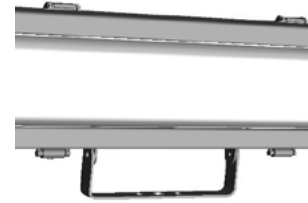
Performance Chart:

Catalog #	Watts	Lumens (840)	LPW (840)	Lumens (850)	LPW (850)
HZL 1 LW UV CP xxx	26	3199	123.0	3332	128.2
HZL 1 LW UV FP xxx	26	2828	108.8	2945	113.3
HZL 1 H LW UV CP xxx	26	3001	115.4	3126	120.2
HZL 1 H LW UV FP xxx	26	2274	87.5	2369	91.1
HZL 1 V LW UV CP xxx	26	3172	122.0	3305	127.1
HZL 1 V LW UV FP xxx	26	2597	99.9	2705	104.0
HZL 1 MD UV CP xxx	43	5316	123.6	5538	128.8
HZL 1 MD UV FP xxx	43	4750	110.5	4948	115.1
HZL 1 H MD UV CP xxx	43	4684	108.9	4879	113.5
HZL 1 H MD UV FP xxx	43	3908	90.9	4071	94.7
HZL 1 V MD UV CP xxx	43	5081	118.2	5292	123.1
HZL 1 V MD UV FP xxx	43	4223	98.2	4399	102.3

Mounting:



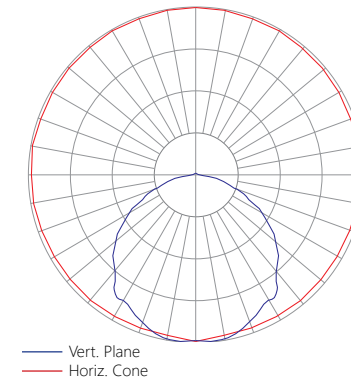
AB
Stainless Steel
Adjustable Bracket



YK
Stainless Steel
Yoke Mount

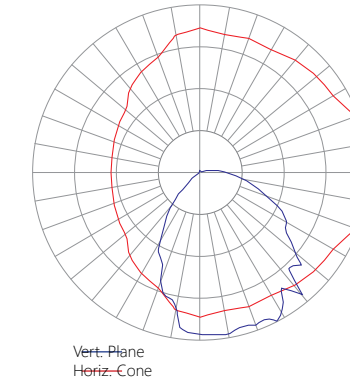
Photometric Data: Relative Luminous Intensity

No Hood, Clear Lens



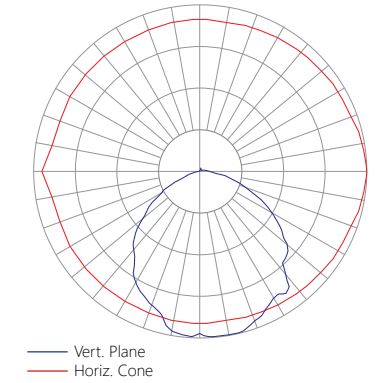
— Vert. Plane
— Horiz. Cone

Horizontal Hood, Clear Lens



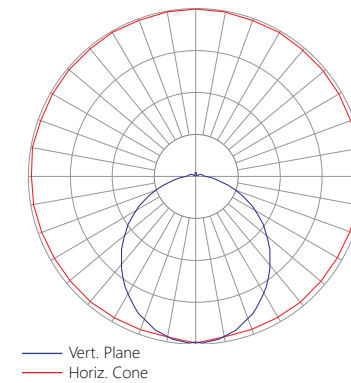
— Vert. Plane
— Horiz. Cone

Vertical Hood, Clear Lens



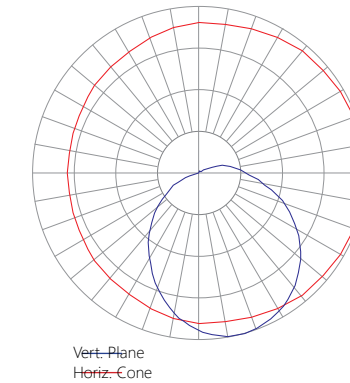
— Vert. Plane
— Horiz. Cone

No Hood, Frosted Lens



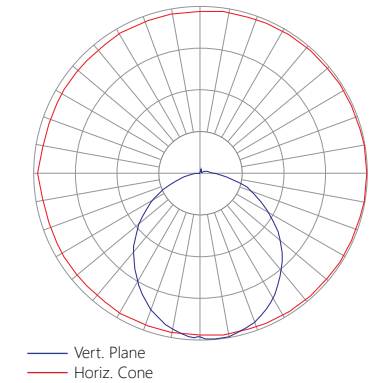
— Vert. Plane
— Horiz. Cone

Horizontal Hood, Frosted Lens



— Vert. Plane
— Horiz. Cone

Vertical Hood, Frosted Lens



— Vert. Plane
— Horiz. Cone

Schematic:

