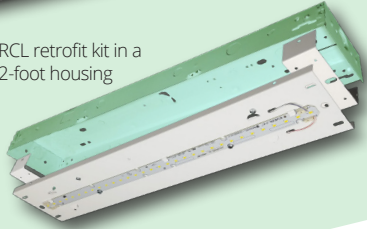


ECL/RCL

LED Strip / Strip Retrofit Kit



RCL retrofit kit in a 2-foot housing



ECL/RCL

2-footer

Lumen output packages:

Low, Medium, High, Very High
***Output range:** ~800-4,000 lumens

Replaces:

- 1-lamp T8 with low ballast factor
- 2-lamp T8 with low ballast factor
- 2-lamp T8 with normal ballast factor
- 2-lamp T8 with high ballast factor
- 3-lamp T8 with high ballast factor
- 1-lamp T5HO
- 2-lamp T5HO



ECL/RCL

3-footer

Lumen output packages: Low, Medium

***Output range:** ~1,200-3,300 lumens

Replaces:

- 1-lamp T8 with low ballast factor
- 2-lamp T8 with normal ballast factor
- 3-lamp T8 with normal ballast factor
- 4-lamp T8 with normal ballast factor



ECL/RCL

4-footer

Lumen output packages: Low, Medium, Medium-High, High, Very High

***Output range:** ~2,200-9,400 lumens

Replaces:

- 1-lamp T8 with normal ballast factor
- 1-lamp T5HO
- 2-lamp T8 with low ballast factor
- 2-lamp T8 with normal ballast factor
- 3-lamp T8 with low ballast factor
- 4-lamp T8 with low ballast factor
- 4-lamp T8 with high ballast factor



ECL/RCL

6-footer

Lumen output packages: Low, Medium, High, Very High

***Output range:** ~3,000-13,000 lumens

Replaces:

- 2-lamp T8 with low ballast factor
- 4-lamp T8 with normal ballast factor
- 6-lamp T8 with normal ballast factor
- 8-lamp T8 with normal ballast factor



ECL/RCL

8-footer

Lumen output packages: Low, Medium-Low, Medium, Medium-High, High, Very High,
***Output range:** ~4,000-18,000 lumens

Replaces:

- 1-lamp T8HO
- 1-lamp T12HO
- 2-lamp T5HO
- 2-lamp F96 T8 or T8HO
- 2-lamp T8 with normal ballast factor
- 2-lamp T12HO
- 4-lamp T5HO
- 4-lamp T8 with normal ballast factor
- 4-lamp T8 with high ballast factor

The versatile ECL LED strip is available in a wide variety of lumen packages and lengths, which allows for flexibility in design and helps maximize energy savings. Multiple control options are available - including dimming sensors, photocells and microwave sensors. Frosted acrylic diffusers are available to help minimize glare and improve aesthetics. A matching LED retrofit kit - the RCL - is also available. Installation is extremely quick and simple, making the RCL a great application to save on labor cost, material cost and waste all while getting the benefit of a highly efficient LED upgrade. The LED boards in both the ECL and RCL are fully upgradeable and replaceable, ensuring you always have a way to secure the most efficient boards. Each ECL and RCL made in the USA - in Henderson, NC, utilizing mostly domestic and some foreign components.

Voltages available: 120-277V, 347V
Size options: 2-foot, 3-foot, 4-foot, 6-foot, 8-foot

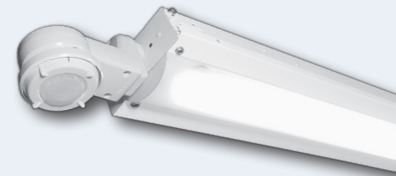
Certifications: UL 1598 listed for US and Canada, suitable for damp locations. DesignLights Consortium qualified on specific configurations.

Warranty: 5 year limited system warranty. 10-year extended warranty available on specific products.



Available CCTs: 3500K 4000K 5000K
CRI: 80

Options: Occupancy sensors, dimming sensors, photocells, cords, emergency packs, step-down transformers, conformal board coating, and more.



UPGRADE VIRTUALLY ANY STRIP TO LED

The RCL can retrofit most fluorescent strips with a customer-provided channel width. A variable width option is also available, good for channel widths from 4.0" to 5.0". The kit ships with all the necessary hardware for installation, along with an instruction sheet.



*LED lumen packages, efficacy data and lumen output is constantly evolving. Visit www.lumenfocus.com/ecl or www.lumenfocus.com/rcl for most up-to-date information, spec sheets and photometry files.