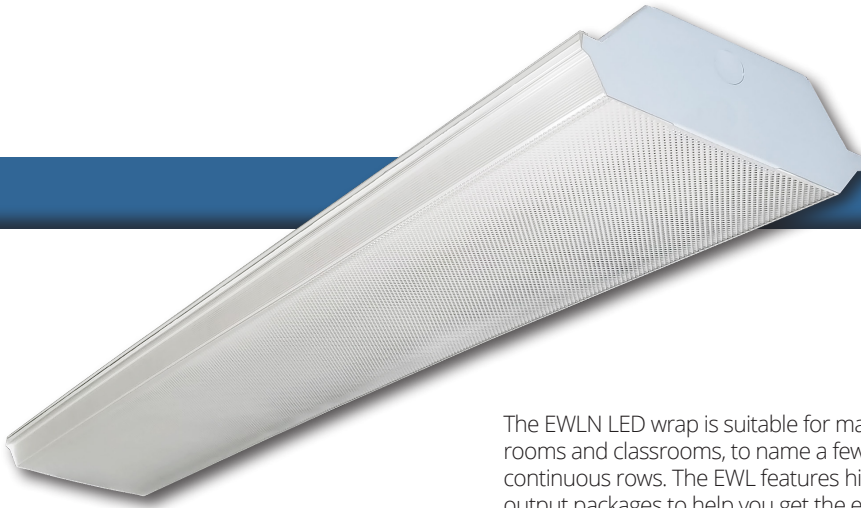


# EWLN

## LED Wrap



The EWLN LED wrap is suitable for many applications: warehouses, manufacturing facilities, stock rooms and classrooms, to name a few. It can be surface-, stem-, or cable-mounted individually or in continuous rows. The EWL features highly efficient boards and drivers, with multiple available lumen output packages to help you get the exact light level you need. Multiple control options are available. The LED boards in the EWLN are fully upgradeable and replaceable through Re-boardABILITY, ensuring you always have a way to secure the most efficient boards. Every EWLN is made in the USA - in Henderson, NC, utilizing mostly domestic and some foreign components.

The EWLN features a clear prismatic acrylic lens designed to evenly illuminate with minimal glare.



**Voltages available:**  
120-277V, 347V

**Size options:** 2-foot, 4-foot, 8-foot lengths

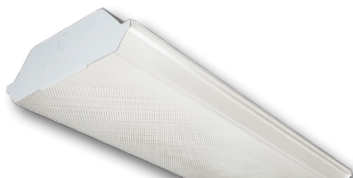
**Certifications:** UL 1598 listed for US and Canada, suitable for damp locations. DesignLights Consortium qualified on specific configurations

**Warranty:** 5 year limited system warranty. 10-year extended warranty available on specific products.

**Available CCTs:** 3000K 3500K 4000K 5000K  
**CRI:** 80

**Options:** Occupancy sensors, Bluetooth-enabled programmable photo/motion sensors, microwave occupancy sensors, emergency packs, v-chain hangers and cable kits for hanging, and more

**10 YEAR  
EXTENDED  
WARRANTY**  
AVAILABLE ON  
CERTAIN MODELS



EWLN

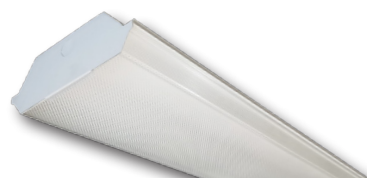
2-foot

**Lumen output packages:** Very Low, Low, Medium, High, Very High

**\*Output range:** ~1,400-5,300 lumens

**Replaces:**

- 1-lamp T8 with normal ballast factor
- 2-lamp T8 with normal ballast factor
- 3-lamp T8 with normal ballast factor
- 4-lamp T8 with normal ballast factor
- 4-lamp T8 with high ballast factor



EWLN

4-foot

**Lumen output packages:** Very Low, Low, Medium, High, Very High

**\*Output range:** ~2,100-10,600 lumens

**Replaces:**

- 1-lamp T8 with normal ballast factor
- 2-lamp T8 with normal ballast factor
- 3-lamp T8 with normal ballast factor
- 4-lamp T8 with normal ballast factor
- 4-lamp T8 with high ballast factor



EWLN

8-foot

**Lumen output packages:** Super Low, Very Low, Low, Medium, High, Very High, Super High

**\*Output range:** ~4,000-17,000 lumens

**Replaces:**

- 2-lamp T8 with normal ballast factor
- 2-lamp T8 with high ballast factor
- 4-lamp T8 with normal ballast factor
- 4-lamp T8 with high ballast factor
- 6-lamp T8 with normal ballast factor
- 3-lamp T12 with normal ballast factor
- 8-lamp T8 with normal ballast factor



\*LED lumen packages, efficacy data and lumen output is constantly evolving.  
Visit [www.lumenfocus.com/ewln](http://www.lumenfocus.com/ewln) for most up-to-date information, spec sheets and photometry files.

**LUMENFOCUS**  
[www.lumenfocus.com](http://www.lumenfocus.com) | (252) 430-6970