



Project: _____
 Location: _____
 Cat. #: _____
 Type: _____
 Quantity: _____

LED

AFL | LED Area/Flood Light

Features:

- High performance LED technology
- 0-10V dimming drivers standard
- Photocell standard - black-out sticker to disable photocell included
- 10kV Surge Protection

Applications:

Suitable for exterior site lighting applications

- Parking Lots
- Loading Docks
- Roadways
- Sign Lighting

Ambient Operating Temp.:

- -20°C to 40°C

Construction:

- Precision die cast aluminum housing
- UV-stabilized polycarbonate lens
- Chip & fade resistant textured polyester powdercoat finish in dark bronze

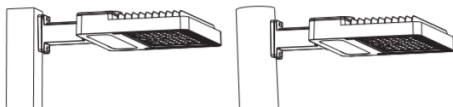
Certifications:

- cULus listed for wet locations
- IP66



Mounting:

The AFL comes standard with 2 mounts:

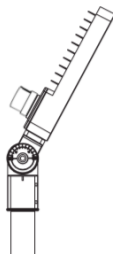


EA - Extension Arm

For direct mounting to square poles or walls.
 For round poles, use included adapter plate.

SK - Slipfitter Knuckle

Fits 2-3/8" to 2-1/2" O.D.
 round tenons.



Predicted L70 Lifetime:

- > 50,000 hrs

Warranty:

- 5 year limited system warranty
- see www.LumenFocus.com for complete warranty terms and

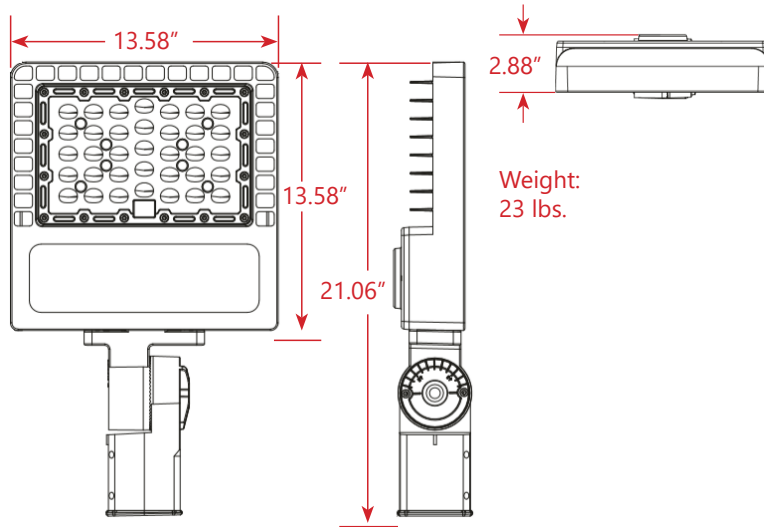


Ordering Guide:

example: AFL MD F UV 840-EA/SK PC BZ

Series	Output	Optic	Voltage	CRI/CCT	-	Mounting	Controls	Finish
AFL	MD	F	UV	840	-	EA/SK	PC	BZ
	MD Medium	F Forward	UV 120-277V	840 80 CRI/4000K		EA/SK Extension Arm / Slipfitter Knuckle	PC Photocell	BZ Bronze

Schematics:



Performance Chart:

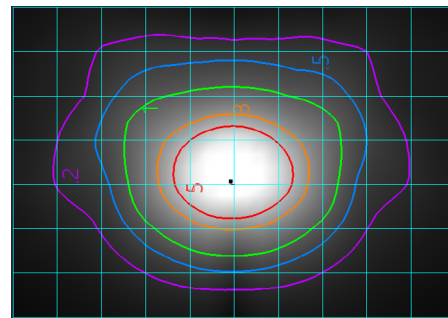
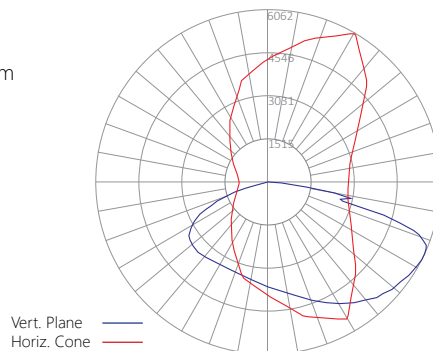
Catalog #	Lumens	Watts	LPW
AFL MD F UV 840	18345	147	125



Photometric Data:

AFL MD F UV 840

Test No.: 2010607
 Luminaire Lumens: 18,345 lm
 Luminaire Watts: 147W
 Efficacy: 124.8 LPW



Mounting Height = 15'
 Grid: 15' x 15' squares

Isolines at:
 5fc/3fc/1fc/0.5fc/0.2fc

Tested in accordance with IES standards utilizing absolute photometry per LM-79-08

