

Project: \_\_\_\_\_  
 Location: \_\_\_\_\_  
 Cat. #: \_\_\_\_\_  
 Type: \_\_\_\_\_  
 Quantity: \_\_\_\_\_

LED

## PBL U 2 | LED Lensed High Bay

### Features:

- High performance LED technology
- 0-10V dimming drivers standard on all models
- Field replaceable LED boards and drivers through Re-boardABILITY (more info on Page 3)
- Multiple shielding options available to help minimize glare and improve aesthetics
- Multiple controls options available

### Applications:

- Suitable for most commercial, industrial and institutional applications
- Retail
  - Warehouse
  - Manufacturing
  - Gymnasiums

### Ambient Operating Temp.:

- -30°C to 40°C

### Predicted L70 Lifetime:

- Up to 189,000 hrs (calculated)
  - For BAA compliant configurations - up to 189,000 hrs (calculated)
- (L70 information for specific configurations available upon request)

### Construction:

- Housing and LED tray is precision brake formed from aluminum
- Pre-painted with a highly durable, highly reflective white finish

### Certifications:

- UL 1598 listed for US and Canada, suitable for damp locations



### Warranty:

- 5 year limited system warranty - see [www.LumenFocus.com](http://www.LumenFocus.com) for complete warranty terms and conditions
- 10 year warranty option available on specific models  
*(Not available on all models. Certain conditions apply. Consult factory or sales representative for details.)*



## Ordering Guide:

example: PBL U 2 MD UV A23F 840 QC20 C6

Series	Length	Output	Voltage	Shielding	CRI/CCT	Hanging	Controls	Options	Finish
PBL U	2								
PBL U	2 2'	<b>LW</b> Low	<b>UV</b> 120-277	<b>A23</b> High Efficiency 23 Pattern Acrylic	<b>835</b> 80 CRI/3500K	<b>Blank</b> None	<b>Blank</b> No Controls	<b>Blank</b> No Options	<b>Blank</b> White
		<b>MD</b> Medium	<b>34</b> 347V	<b>A23F</b> High Efficiency 23 Pattern Acrylic, Frosted	<b>840</b> 80 CRI/4000K	<b>QC</b> 10' Quick Hang Cable Kit	<b>ZOS</b> Occupancy Sensor (On/Off)	<b>EXT10</b> 10-Year Extended Warranty <sup>(4)</sup>	<b>BK</b> Matte Black
			<b>48</b> 480V	<b>L118</b> 0.118" Impact Resistant Lexan	<b>850</b> 80 CRI/5000K	<b>QC20</b> 20' Quick Hang Cable Kit	<b>ZOSD</b> Occupancy Sensor (On/Off/Dim)	<b>C6</b> 6' Single Circuit Cord	<b>SL</b> Metallic Silver
							<b>Z221BL_</b> Wattstopper Programmable Photo/Motion Multi-Voltage Sensor (high/low/off) <sup>(1)</sup>	<b>C65W</b> 6' Single Circuit Cord with Low Voltage Connections	
							<b>Z321BL_</b> Wattstopper Bluetooth-enabled Programmable Photo/Motion Multi-Voltage Sensor (high/low/off) <sup>(1)</sup>	<b>C10</b> 10' Single Circuit Cord	
							<b>ZPC</b> Photocell	<b>C105W</b> 10' Single Circuit Cord with Low Voltage Connections	
							<b>ZFMS</b> Douglas FMS Sensor with Dimming/Occupancy/Daylight Harvesting with Newtork Capabilities <sup>(2)</sup>	<b>D6</b> 6' Dual Circuit Cord	
							<b>ZENLO</b> Enlighted Ruggedized Sensor with Dimming/Occupancy/Daylight Harvesting and Enlighted One System <sup>(3)</sup>	<b>D10</b> 10' Dual Circuit Cord	
							<b>ZENLC</b> Enlighted Ruggedized Sensor with Dimming/Occupancy/ Daylight Harvesting and Enlighted Connected System <sup>(3)</sup>	<b>P(NEMA)</b> Plug (Specify NEMA configuration)	
							<b>ZENLI</b> Enlighted Ruggedized Sensor with Dimming/Occupancy/Daylight Harvesting and Enlighted IoT System <sup>(3)</sup>	<b>WG</b> Wire Guard	
								<b>WGE</b> Extended Wire Guard for End-Mounted Sensor	
								<b>SC</b> Safety Cable	
								<b>F</b> Fuse	
								<b>EM2</b> Emergency Pack <sup>(5)</sup>	
								<b>SDT(480V)</b> 480V to 277V Step Down Transformer	
								<b>CC</b> Conformal Coating	
								<b>LVL</b> 0-10V Dimming Leads for Easy Field Access	
								<b>BAA</b> Buy American Act Compliant	

## Notes

- <sup>(1)</sup> " \_ " = lens type. See Page 5 for lens descriptions.  
<sup>(2)</sup> Max ceiling height for Douglas FMS sensor: 40 feet.  
 See Page 4 for more details on advanced controls.  
<sup>(3)</sup> Max ceiling height for Enlighted Ruggedized sensor 50 feet.  
 See Page 4 for more details on advanced controls.  
<sup>(4)</sup> Not available on all models. Certain conditions apply.  
 Consult factory or sales representative for details.  
<sup>(5)</sup> EM2 - Up to 16W. 120-277V / 0°C-50°C ambient.

## Controls Accessories (order separately)



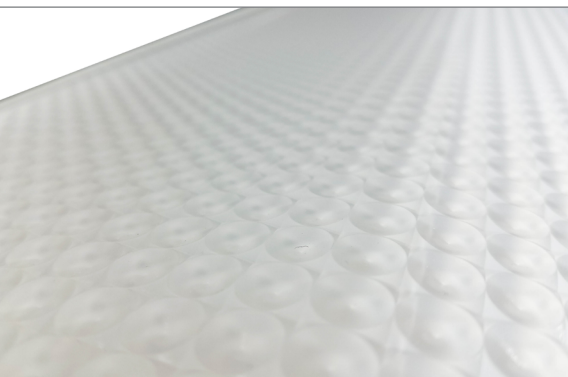
### For Douglas Controls

- BT-DMSW-U-A Bluetooth 1 Zone Dimmer  
 BT-4BTSW-U-A Bluetooth 4-Button Wall Station  
 BT-8BTSW-U-A Bluetooth 8-Button Wall Station

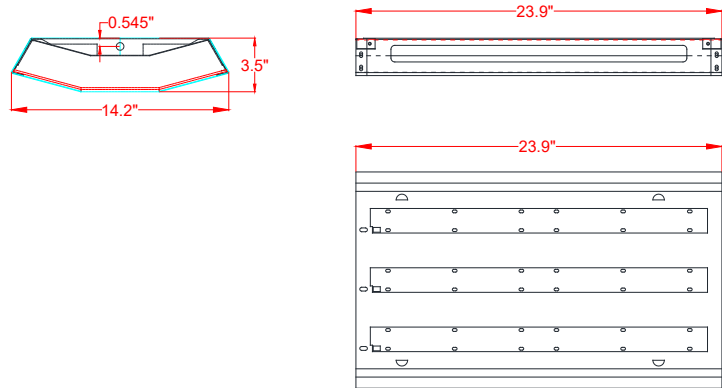


### For Enlighted Controls

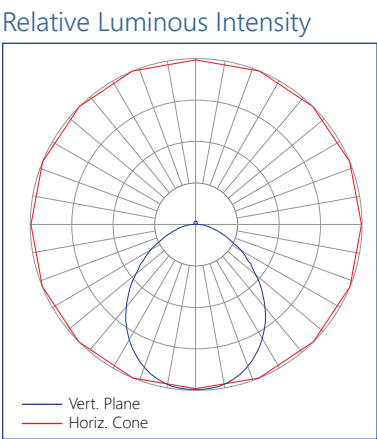
- WS-2-00 Enlighted Remote Control Wall Switch  
 (for Enlighted Connected & IoT)  
 WS-2-00-IL Enlighted Remote Control Wall Switch  
 (for Enlighted One)



### Schematic:



### Photometric Data:



### Performance Chart:

Catalog #	Lumens	Watts	LPW	Catalog #	Lumens	Watts	LPW	Catalog #	Lumens	Watts	LPW
PBL U 2 LW UV A23F 835	7827	60	130.5	PBL U 2 LW UV A23F 840	8086	60	134.8	PBL U 2 LW UV A23F 850	8328	60	138.8
PBL U 2 MD UV A23F 835	10869	87	124.9	PBL U 2 MD UV A23F 840	11228	87	129.1	PBL U 2 MD UV A23F 850	11565	87	132.9

Lumen Adjustment Factors: WG: 0.95

### LUMENFOCUS Re-boardABILITY

The PBL U features field replaceable boards and drivers. This allows you to upgrade to more efficient technology in the future. Or, in the rare event of a failure, you can rapidly replace defective components. Re-boardABILITY helps to ensure you won't get stuck with an obsolete light fixture. [Learn more about Re-boardABILITY here.](#)



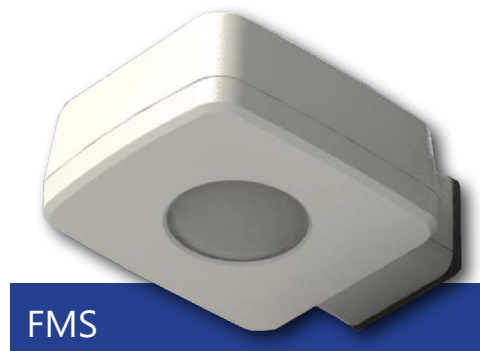
[Click here for a video demonstration of the re-boarding process on a PBL.](#)  
Note: Exact time varies depending on the model.



## Douglas Lighting Controls, Inc.: Cloud-based controls

The PBL U can be equipped with the Douglas FMS sensor, which is designed for high bay applications.

With a max sensor height up to 40 feet, the FMS is ideal for applications like warehouses and manufacturing facilities. It can be installed for on/off control or bi-level light functionality. The daylight sensor provides additional savings by dimming the lights to work with the amount of natural available daylight.



- Configuration from the floor via smartphone app
- Bluetooth mesh network is created between devices for control over a group of Douglas sensors
- Occupancy and daylight sensing
- IP65-rated
- 0-10V dimming
- 150 feet clear line of site, 50 feet through standard walls (distances may vary based on location and environment)

## CheckLight® Energy Management System

Douglas controls can be integrated with the CheckLight® Energy Management system. This system can help you uncover energy conversion opportunities, create conservation strategies, analyze lighting load inefficiencies, and make configuration changes from anywhere with Douglas' user-friendly interface. You can get measurements, reports, and control your system from a web-based application.

CheckLight® has the capability to look at different facilities within a portfolio and use data benchmarks to compare building performances.

- Find energy conservation opportunities
- Create energy saving strategies
- Analyze load inefficiencies
- Optimize energy management

## Enlighted: All-in-one sensors, upgradeable systems

Enlighted's IP65-rated Ruggedized Sensor is an all-in-one unit: task tuning, high-end trimming, daylight harvesting, and occupancy/vacancy detection. Max installation height is 50 feet.

Enlighted sensors come standard with the Enlighted One system (the "ZENLO" option). Enlighted Connected ("ZENLC") offers even more options. The Enlighted IoT ("ZENLI") option allows the full implementation of Enlighted's services. Each system can be fully upgraded to the next tier in the future. So if you start with Enlighted One but want to add energy reporting or building management systems integration in the future, you can.



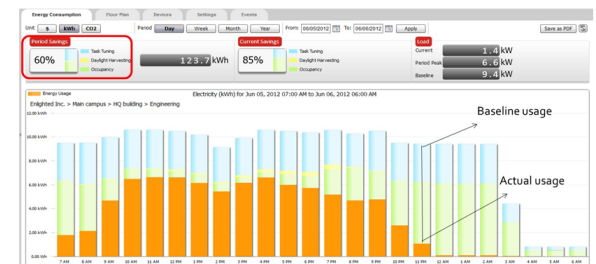
Enlighted Capabilities*	Enlighted One (ZENLO)	Enlighted Connected (ZENLC)	Enlighted IoT (ZENLI)
Motion and Switch Groups	✓	✓	✓
Daylight Harvesting	✓	✓	✓
Schedule Lighting		✓	✓
Energy Reporting & Optimization		✓	✓
Environment Data & Lighting Controls API		✓	✓
Building Management System Integration		✓	✓
Where & Space Applications			✓
Location & Occupancy APIs & Beacons			✓
Future App & API Ready			✓

**Note:** Additional equipment required for ZENLC and ZENLI

## Real-time data analytics

Enlighted's control units compile data in real-time, which can be viewed via the Energy Manager. The Energy Manager is part of the Enlighted Connected and Enlighted IoT configurations.

- Real-time measurements and verification of energy savings
- Space analytics - data can be compiled into motion trails and heat maps
- Analyze traffic density and congestion in a space



Learn more about our available advanced controls options here:

[www.lumenfocus.com/controls-overview](http://www.lumenfocus.com/controls-overview)

© 2022 Enlighted for all Enlighted content and images.

© 2022 Douglas Lighting Controls, Inc. for all Douglas content and images. The Bluetooth® word, mark and logos are registered trademarks owned by the Bluetooth SIG, Inc. and any use of such marks by Douglas Lighting Controls is under license. Other trademarks and trade names are those of their respective owners.



## Other controls available:



### Dimming Sensors (Z221B/Z321B)

- The Wattstopper FSP sensor provides multi-level control based on motion and/or daylight contribution
- Comes pre-installed on the end cap
- Rated for cold locations
- Parameters for Bluetooth-enabled Z321B adjustable via phone app - iOS or Android
- Parameters for Z221B adjustable via wireless configuration tool (FSIR-100 - sold separately)
- Three lenses available, tailored for the ideal detection area and mounting height:
  - **L2**: 360° lens, maximum coverage 48', diameter from 8' height
  - **L3**: 360° lens, maximum coverage 40', diameter from 20' height
  - **L7**: 360° lens, maximum coverage 100', diameter from 40' height

**Above: Phone app interface for Z321B**



### On/Off Occupancy Sensors (ZOS)

An optional occupancy sensor controls individual fixtures on or off based on occupancy in detection zone. Sensor used: Leviton OSFHU-ITW (pictured), or an equivalent.

## Other Options:



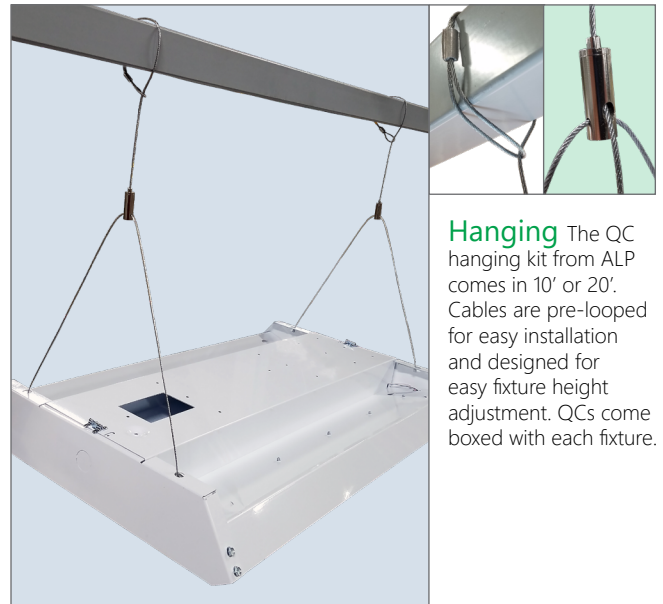
**Cords** are available in single circuit or dual circuit, 6' or 10'. Standard plug is optional, as are other NEMA configurations if specified.



**Shielding** Available in a high efficiency 23 pattern acrylic lens (frosted or clear), and an impact resistant clear lexan lens



**Conformal coating** Grants LED boards added protection from moisture and corrosion in more hazardous environments.



**Hanging** The QC hanging kit from ALP comes in 10' or 20'. Cables are pre-looped for easy installation and designed for easy fixture height adjustment. QCs come boxed with each fixture.

