



Project: _____
 Location: _____
 Cat. #: _____
 Type: _____
 Quantity: _____

LED

PBL 4 HD | LED Heavy Duty High Bay

Features:

- High performance LED technology
- 0-10V dimming drivers standard on all models - dimmable to <10% on all models, with most dimmable to 1%
- DALI drivers available based on configuration
- Field replaceable LED boards and drivers through Re-boardABILITY (more info on Page 3)
- Frosted diffusers available to help minimize glare and improve aesthetics
- A wide variety of lumen packages allows for flexibility in design and helps maximize energy savings
- Multiple controls options available

Applications:

Suitable for most commercial, industrial and institutional applications

- Gymnasiums
- Recreation Centers
- Manufacturing
- Warehouse
- Cold/Frozen Storage

Ambient Operating Temp.:

- -30°C to 40°C

Predicted L70 Lifetime:

- Up to 189,000 hrs (calculated)
(L70 information for specific configurations available upon request)
- For BAA compliant configurations - up to 189,000 hrs (calculated)

Construction:

- Housing is precision brake formed from heavy duty 0.063" aluminum
- Pre-painted with a highly durable, highly reflective white finish

Certifications:

- UL 1598 listed for US and Canada, suitable for damp locations
- DesignLights Consortium qualified on specific configurations (refer to DLC qualified products list for exact model numbers)
<http://designlights.org/>



Warranty:

- 5 year limited system warranty - see www.LumenFocus.com for complete warranty terms and conditions
- 10 year warranty option available on specific models
(Not available on all models. Certain conditions apply. Consult factory or sales representative for details.)

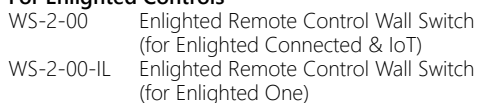


example: PBL 4 HI UV FR 850 HDW PMS ST(18") OS WG

Notes

(6) EM2 - Up to 16W, 120-277V / 0°C-50°C ambient.

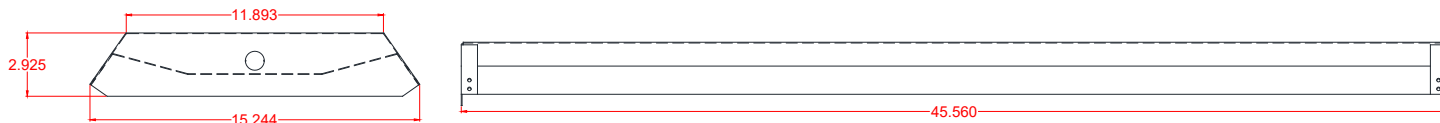
Controls Accessories *(order separately)*



<p>ZPC PhotoCell</p> <p>ZFMS Douglas FMS Sensor with Dimming/Occupancy/Daylight Harvesting with Newtork Capabilities⁽³⁾</p> <p>ZENLO Enlightened Ruggedized Sensor with Dimming/ Occupancy/Daylight Harvesting and Enlighted One System⁽⁴⁾</p> <p>ZENLC Enlightened Ruggedized Sensor with Dimming/ Occupancy/Daylight Harvesting and Enlighted Connected System⁽⁴⁾</p> <p>ZENLI Enlighted Ruggedized Sensor with Dimming/ Occupancy/Daylight Harvesting and Enlighted IoT System⁽⁴⁾</p>	<p>D6 6' Dual Circuit Cord</p> <p>D10 10' Dual Circuit Cord</p> <p>P(NEMA) Plug (Specify NEMA configuration)</p> <p>WG Wire Guard</p> <p>WGE Extended Wire Guard for End-Mounted Sensor</p> <p>SC Safety Cable</p> <p>F Fuse</p> <p>EM2 Emergency Pack⁽⁶⁾</p> <p>SDT(480V) 480V to 277V Step Down Transformer</p> <p>CC Conformal Coating</p> <p>LVL 0-10V Dimming Leads for Easy Field Access</p> <p>BAA Buy American Act Compliant</p>
---	---



Schematic:



Performance Chart:

Catalog #	Lumens	Watts	LPW	Catalog #	Lumens	Watts	LPW	Catalog #	Lumens	Watts	LPW
PBL 4 SL HE UV 835	12018	84	143.1	PBL 4 SL HE UV 840	12416	84	147.8	PBL 4 SL HE UV 850	12788	84	152.2
PBL 4 VL HE UV 835	13905	100	139.1	PBL 4 VL HE UV 840	14365	100	143.7	PBL 4 VL HE UV 850	14796	100	148.0
PBL 4 LW HE UV 835	15913	118	134.9	PBL 4 LW HE UV 840	16439	118	139.3	PBL 4 LW HE UV 850	16932	118	143.5
PBL 4 MD HE UV 835	19697	140	140.7	PBL 4 MD HE UV 840	20349	140	145.3	PBL 4 MD HE UV 850	20959	140	149.7
PBL 4 HI HE UV 835	23543	174	135.3	PBL 4 HI HE UV 840	24322	174	139.8	PBL 4 HI HE UV 850	25051	174	144.0
PBL 4 SL UV 835	11998	86	139.5	PBL 4 SL UV 840	12394	86	144.1	PBL 4 SL UV 850	12766	86	148.4
PBL 4 VL UV 835	13982	104	134.4	PBL 4 VL UV 840	14444	104	138.9	PBL 4 VL UV 850	14877	104	143.1
PBL 4 LW UV 835	17193	136	126.4	PBL 4 LW UV 840	17761	136	130.6	PBL 4 LW UV 850	18294	136	134.5
PBL 4 MD UV 835	20866	155	134.6	PBL 4 MD UV 840	21556	155	139.1	PBL 4 MD UV 850	22203	155	143.2
PBL 4 HI UV 835	22943	174	131.9	PBL 4 HI UV 840	23701	174	136.2	PBL 4 HI UV 850	24412	174	140.3

Lumen Adjustment Factors: FR lens: 0.93
WG: 0.90
FR w/ WG: 0.85

LUMENFOCUS Re-boardABILITY

The PBL HD features field replaceable boards and drivers. This allows you to upgrade to more efficient technology in the future. Or, in the rare event of a failure, you can rapidly replace defective components. Re-boardABILITY helps to ensure you won't get stuck with an obsolete light fixture. [Learn more about Re-boardABILITY here.](#)



[Click here for a video demonstration of the re-boarding process on a PBL.](#)

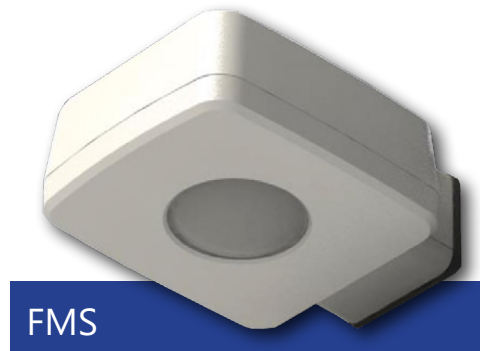
Note: Exact time varies depending on the model.



Douglas Lighting Controls, Inc.: Cloud-based controls

The PBL HD can be equipped with the Douglas FMS sensor, which is designed for high bay applications.

With a max sensor height up to 40 feet, the FMS is ideal for applications like warehouses and manufacturing facilities. It can be installed for on/off control or bi-level light functionality. The daylight sensor provides additional savings by dimming the lights to work with the amount of natural available daylight.



- Configuration from the floor via smartphone app
- Bluetooth mesh network is created between devices for control over a group of Douglas sensors
- Occupancy and daylight sensing
- IP65-rated
- 0-10V dimming
- 150 feet clear line of site, 50 feet through standard walls (distances may vary based on location and environment)

CheckLight® Energy Management System

Douglas controls can be integrated with the CheckLight® Energy Management system. This system can help you uncover energy conversion opportunities, create conservation strategies, analyze lighting load inefficiencies, and make configuration changes from anywhere with Douglas' user-friendly interface. You can get measurements, reports, and control your system from a web-based application.

CheckLight® has the capability to look at different facilities within a portfolio and use data benchmarks to compare building performances.

- Find energy conservation opportunities
- Create energy saving strategies
- Analyze load inefficiencies
- Optimize energy management

Enlighted: All-in-one sensors, upgradeable systems

Enlighted's IP65-rated Ruggedized Sensor is an all-in-one unit: task tuning, high-end trimming, daylight harvesting, and occupancy/vacancy detection. Max installation height is 50 feet.

Enlighted sensors come standard with the Enlighted One system (the "ZENLO" option). Enlighted Connected ("ZENLC") offers even more options. The Enlighted IoT ("ZENLI") option allows the full implementation of Enlighted's services. Each system can be fully upgraded to the next tier in the future. So if you start with Enlighted One but want to add energy reporting or building management systems integration in the future, you can.



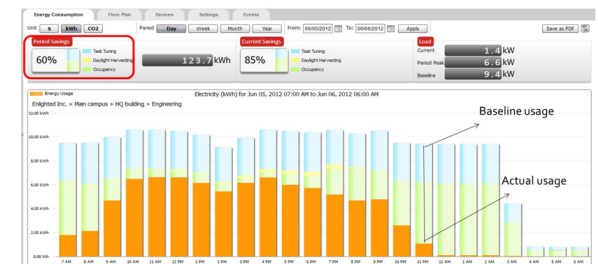
Enlighted Capabilities*	Enlighted One (ZENLO)	Enlighted Connected (ZENLC)	Enlighted IoT (ZENLI)
Motion and Switch Groups	✓	✓	✓
Daylight Harvesting	✓	✓	✓
Schedule Lighting		✓	✓
Energy Reporting & Optimization		✓	✓
Environment Data & Lighting Controls API		✓	✓
Building Management System Integration		✓	✓
Where & Space Applications			✓
Location & Occupancy APIs & Beacons			✓
Future App & API Ready			✓

Note: Additional equipment required for ZENLC and ZENLI

Real-time data analytics

Enlighted's control units compile data in real-time, which can be viewed via the Energy Manager. The Energy Manager is part of the Enlighted Connected and Enlighted IoT configurations.

- Real-time measurements and verification of energy savings
- Space analytics - data can be compiled into motion trails and heat maps
- Analyze traffic density and congestion in a space



Learn more about our available advanced controls options here:

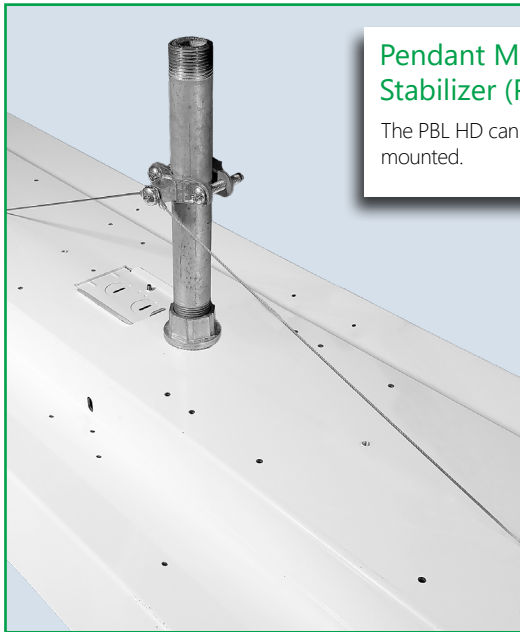
www.lumenfocus.com/controls-overview

© 2022 Enlighted for all Enlighted content and images.

© 2022 Douglas Lighting Controls, Inc. for all Douglas content and images. The Bluetooth® word, mark and logos are registered trademarks owned by the Bluetooth SIG, Inc. and any use of such marks by Douglas Lighting Controls is under license. Other trademarks and trade names are those of their respective owners.



Hanging Options Available:

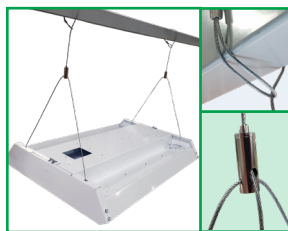


Pendant Mount with Stabilizer (PMS)

The PBL HD can be pendant mounted.

Surface Mount

The PBL HD is designed to be easily mounted to any sturdy surface. Simply remove the hex head screws holding the driver cover (top picture, in green) to access the bottom of the housing below. The housing can be mounted to the surface from the four holes in each corner of the channel (bottom picture, circled).



Cable Mount (QC, QC20)

The QC hanging kit from ALP comes in 10' or 20'. Cables are pre-looped for easy installation and designed for easy fixture height adjustment. QCs come boxed with each fixture. A mechanically fastened safety cable (SC) is also optional.

Wireguard and shielding

Add an optional wireguard for added stability and protection - ideal for gymnasiums or other areas where the luminaire may be struck. Optional frosted acrylic diffuser lenses minimize glare and improve aesthetics.

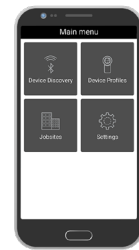


Other controls available:



Dimming Sensors (Z221B/Z321B)

- The Wattstopper FSP sensor provides multi-level control based on motion and/or daylight contribution
- Comes pre-installed on the end cap
- Rated for cold locations
- Parameters for Bluetooth-enabled Z321B adjustable via phone app - iOS or Android
- Parameters for Z221B adjustable via wireless configuration tool (FSIR-100 - sold separately)
- Three lenses available, tailored for the ideal detection area and mounting height:
 - L2: 360° lens, maximum coverage 48', diameter from 8' height
 - L3: 360° lens, maximum coverage 40', diameter from 20' height
 - L7: 360° lens, maximum coverage 100', diameter from 40' height



Phone app interface for Z321B

On/Off Occupancy Sensors (ZOS)

An occupancy sensor controls individual fixtures on or off based on occupancy in detection zone. Sensor used: Leviton OSFHU-ITW (pictured), or equivalent.



Other Options:



Cords are available in single circuit or dual circuit, 6' or 10'. Standard plug is optional, as are other NEMA configurations if specified.

Conformal coating Grants LED boards added protection from moisture and corrosion in more hazardous environments.

