



Project: _____
 Location: _____
 Cat. #: _____
 Type: _____
 Quantity: _____

LED

PBL 2W | LED High Bay

Features:

- High performance LED technology
- 0-10V dimming drivers standard on all models - dimmable to <10% on all models, with most dimmable to 1%
- DALI drivers available based on configuration
- Field replaceable LED boards and drivers through Re-boardABILITY (more info on Page 3)
- Frosted diffusers available to help minimize glare and improve aesthetics
- A wide variety of lumen packages allows for flexibility in design and helps maximize energy savings
- Multiple controls options available

Applications:

- Suitable for most commercial, industrial and institutional applications
- Retail
 - Warehouse
 - Manufacturing
 - Cold/Frozen Storage

Ambient Operating Temp.:

- -30°C to 40°C

Predicted L70 Lifetime:

- Up to 189,000 hrs (calculated)
(L70 information for specific configurations available upon request)
- For BAA compliant configurations - up to 189,000 hrs (calculated)

Construction:

- Housing and LED tray is precision brake formed from aluminum
- Pre-painted with a highly durable, highly reflective white finish

Certifications:

- UL 1598 listed for US and Canada, suitable for damp locations
- DesignLights Consortium qualified on specific configurations (refer to DLC qualified products list for exact model numbers)
<http://designlights.org/>



Ordering Guide:

example: PBL 2W MH UV 850 QC20 OSD C6

Series	Length	Output	Performance	Voltage	Shielding	CRI/CCT	Hanging	Controls	Options	Finish
PBL	2W									
PBL	2W 2'	MH Medium High	Blank Standard	UV 120-277	Blank No Lenses	835 80 CRI/3500K	Blank None	Blank No Controls	Blank No Options	Blank White
		HI High	HE High Efficiency	34 347V ⁽¹⁾	FR Frosted Acrylic Diffusers	840 80 CRI/4000K	QC 10' Quick Hang Cable Kit	ZOS Occupancy Sensor (On/Off)	EXT10 10-Year Extended Warranty ⁽⁵⁾	BK Matte Black
				48 480V ⁽¹⁾		850 80 CRI/5000K	QC20 20' Quick Hang Cable Kit	ZOSD Occupancy Sensor (On/Off/Dim)	C6 6' Single Circuit Cord	SL Metallic Silver
							SM Surface Mount	Z221BL_ Wattstopper Programmable Photo/Motion Multi-Voltage Sensor (high/low/off) ⁽²⁾	C65W 6' Single Circuit Cord with Low Voltage Connections	
								Z321BL_ Wattstopper Bluetooth-enabled Programmable Photo/Motion Multi-Voltage Sensor (high/low/off) ⁽²⁾	C10 10' Single Circuit Cord	
								ZPC Photocell	C105W 10' Single Circuit Cord with Low Voltage Connections	
								ZFMS Douglas FMS Sensor with Dimming/Occupancy/Daylight Harvesting with Newtork Capabilities ⁽³⁾	D6 6' Dual Circuit Cord	
								ZENLO Enlighted Ruggedized Sensor with Dimming/Occupancy/Daylight Harvesting and Enlighted One System ⁽⁴⁾	D10 10' Dual Circuit Cord	
								ZENLC Enlighted Ruggedized Sensor with Dimming/Occupancy/Daylight Harvesting and Enlighted Connected System ⁽⁴⁾	P(NEMA) Plug (Specify NEMA configuration)	
								ZENLI Enlighted Ruggedized Sensor with Dimming/Occupancy/Daylight Harvesting and Enlighted IoT System ⁽⁴⁾	WG Wire Guard	
									WGE Extended Wire Guard for End-Mounted Sensor	
									SC Safety Cable	
									F Fuse	
									EM2 Emergency Pack ⁽⁶⁾	
									SDT(480V) 480V to 277V Step Down Transformer	
									CC Conformal Coating	
									LVL 0-10V Dimming Leads for Easy Field Access	
									BAA Buy American Act Compliant	

Notes

- ⁽¹⁾ PBL 2W MH and PBL 2W MH HE currently only available in 120-277V, or with step-down transformer in an application where 347-480V is needed.
⁽²⁾ " _ " = lens type. See Page 6 for lens descriptions.
⁽³⁾ Max ceiling height for Douglas FMS sensor: 40 feet. See Page 5 for more details on advanced controls.
⁽⁴⁾ Max ceiling height for Enlighted Ruggedized sensor 50 feet. See Page 5 for more details on advanced controls.
⁽⁵⁾ Not available on all models. Certain conditions apply. Consult factory or sales representative for details.
⁽⁶⁾ EM2 - Up to 16W. 120-277V / 0°C-50°C ambient.

Controls Accessories (order separately)



For Douglas Controls

- BT-DMSW-U-A Bluetooth 1 Zone Dimmer
 BT-4BTSW-U-A Bluetooth 4-Button Wall Station
 BT-8BTSW-U-A Bluetooth 8-Button Wall Station

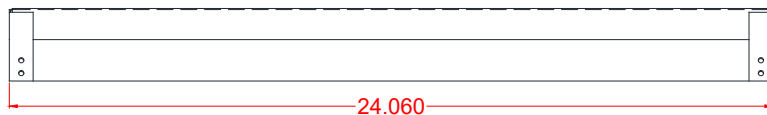
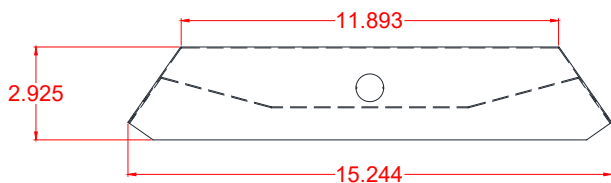


For Enlighted Controls

- WS-2-00 Enlighted Remote Control Wall Switch (for Enlighted Connected & IoT)
 WS-2-00-IL Enlighted Remote Control Wall Switch (for Enlighted One)



Schematic:



Performance Chart:

Catalog #	Lumens	Watts	LPW	Catalog #	Lumens	Watts	LPW	Catalog #	Lumens	Watts	LPW
PBL 2W MH HE UV 835	13766	100	137.7	PBL 2W MH HE UV 840	14221	100	142.2	PBL 2W MH HE UV 850	14648	100	146.5
PBL 2W HI HE UV 835	17003	106	160.4	PBL 2W HI HE UV 840	17475	106	164.9	PBL 2W HI HE UV 850	17947	106	169.3
PBL 2W MH UV 835	13432	104	129.2	PBL 2W MH UV 840	13876	104	133.4	PBL 2W MH UV 850	14292	104	137.4
PBL 2W HI UV 835	17889	119	150.3	PBL 2W HI UV 840	18385	119	154.4	PBL 2W HI UV 850	18881	119	158.2

Lumen Adjustment Factors: FR lens: 0.93
WG: 0.90
FR w/ WG: 0.85

LUMENFOCUS Re-boardABILITY

The PBL features field replaceable boards and drivers. This allows you to upgrade to more efficient technology in the future. Or, in the rare event of a failure, you can rapidly replace defective components. Re-boardABILITY helps to ensure you won't get stuck with an obsolete light fixture. [Learn more about Re-boardABILITY here.](#)



[Click here for a video demonstration of the re-boarding process on a PBL.](#)

Note: Exact time varies depending on the model.



Photometric Data:

PBL 2W HI UV 835

Test No.: LLIA000621-001

Luminaire Lumens: 17,053 lm

Luminaire Watts: 130.2W

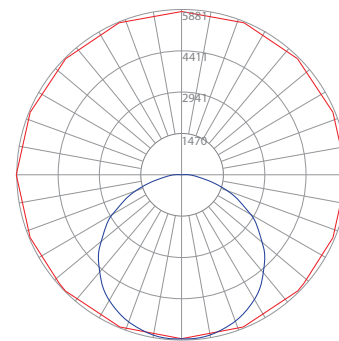
Efficacy: 131.0 LPW

Spacing Criterion (0-180): 1.32

Spacing Criterion (90-270): 1.28

Luminance Data (cd/sq.m)

Angle In Degrees	Average 0-Deg	Average 45-Deg	Average 90-Deg
45	25441	24725	24763
55	24834	24268	24498
65	23361	23138	21381
75	19268	14947	16254
85	9579	6721	7667



— Vert. Plane
— Horiz. Cone

Coefficients Of Utilization - Zonal Cavity Method

Effective Floor Cavity Reflectance 0.20

RC															
RW	70	50	30	10	70	50	30	10	50	30	10	50	30	10	
0	119	119	119	119	116	116	116	116	111	111	111	106	106	106	
1	109	104	100	96	106	102	98	95	98	95	92	94	91	89	
2	99	91	84	78	96	89	83	77	85	80	76	82	78	74	
3	90	80	71	65	88	78	70	64	75	69	63	72	67	62	
4	82	70	62	55	80	69	61	54	67	59	54	64	58	53	
5	76	63	54	47	74	62	53	47	60	52	46	58	51	46	
6	70	56	47	41	68	55	47	41	54	46	40	52	45	40	
7	65	51	42	36	63	50	42	36	49	41	36	47	40	35	
8	60	47	38	32	59	46	38	32	45	37	32	43	37	32	
9	56	43	34	29	55	42	34	29	41	34	29	40	33	28	
10	53	39	31	26	51	39	31	26	38	31	26	37	30	26	

Zonal Lumen Summary

Zone	Lumens	%Fixt
0-20	2136.96	12.50
0-30	4565.59	26.80
0-40	7540.00	44.20
0-60	13587.73	79.70
0-80	16853.12	98.80
0-90	17053.36	100.00
90-120	0.00	0.00
90-130	0.00	0.00
90-150	0.00	0.00
90-180	0.00	0.00
0-180	17053.36	100.00

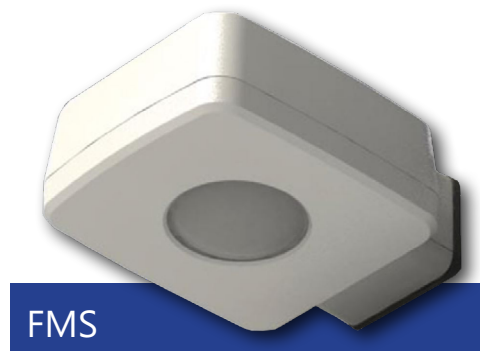
Tested in accordance with IES standards utilizing absolute photometry per LM-79-08



Douglas Lighting Controls, Inc.: Cloud-based controls

The PBL can be equipped with the Douglas FMS sensor, which is designed for high bay applications.

With a max sensor height up to 40 feet, the FMS is ideal for applications like warehouses and manufacturing facilities. It can be installed for on/off control or bi-level light functionality. The daylight sensor provides additional savings by dimming the lights to work with the amount of natural available daylight.



- Configuration from the floor via smartphone app
- Bluetooth mesh network is created between devices for control over a group of Douglas sensors
- Occupancy and daylight sensing
- IP65-rated
- 0-10V dimming
- 150 feet clear line of site, 50 feet through standard walls (distances may vary based on location and environment)

CheckLight® Energy Management System

Douglas controls can be integrated with the CheckLight® Energy Management system. This system can help you uncover energy conversion opportunities, create conservation strategies, analyze lighting load inefficiencies, and make configuration changes from anywhere with Douglas' user-friendly interface. You can get measurements, reports, and control your system from a web-based application.

CheckLight® has the capability to look at different facilities within a portfolio and use data benchmarks to compare building performances.

- Find energy conservation opportunities
- Create energy saving strategies
- Analyze load inefficiencies
- Optimize energy management

Enlighted: All-in-one sensors, upgradeable systems

Enlighted's IP65-rated Ruggedized Sensor is an all-in-one unit: task tuning, high-end trimming, daylight harvesting, and occupancy/vacancy detection. Max installation height is 50 feet.

Enlighted sensors come standard with the Enlighted One system (the "ZENLO" option). Enlighted Connected ("ZENLC") offers even more options. The Enlighted IoT ("ZENLI") option allows the full implementation of Enlighted's services. Each system can be fully upgraded to the next tier in the future. So if you start with Enlighted One but want to add energy reporting or building management systems integration in the future, you can.



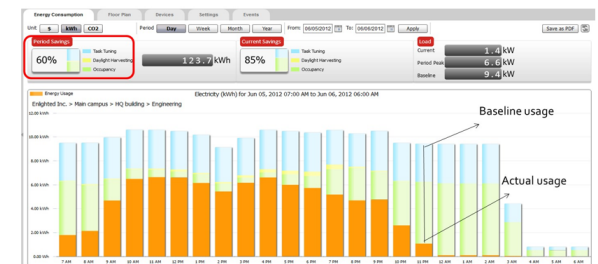
Enlighted Capabilities*	Enlighted One (ZENLO)	Enlighted Connected (ZENLC)	Enlighted IoT (ZENLI)
Motion and Switch Groups	✓	✓	✓
Daylight Harvesting	✓	✓	✓
Schedule Lighting		✓	✓
Energy Reporting & Optimization		✓	✓
Environment Data & Lighting Controls API		✓	✓
Building Management System Integration		✓	✓
Where & Space Applications			✓
Location & Occupancy APIs & Beacons			✓
Future App & API Ready			✓

Note: Additional equipment required for ZENLC and ZENLI

Real-time data analytics

Enlighted's control units compile data in real-time, which can be viewed via the Energy Manager. The Energy Manager is part of the Enlighted Connected and Enlighted IoT configurations.

- Real-time measurements and verification of energy savings
- Space analytics - data can be compiled into motion trails and heat maps
- Analyze traffic density and congestion in a space



Learn more about our available advanced controls options here:

www.lumenfocus.com/controls-overview

© 2022 Enlighted for all Enlighted content and images.

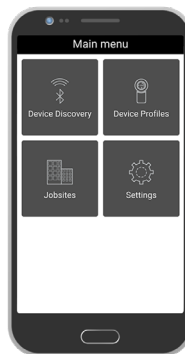
© 2022 Douglas Lighting Controls, Inc. for all Douglas content and images. The Bluetooth® word, mark and logos are registered trademarks owned by the Bluetooth SIG, Inc. and any use of such marks by Douglas Lighting Controls is under license. Other trademarks and trade names are those of their respective owners.



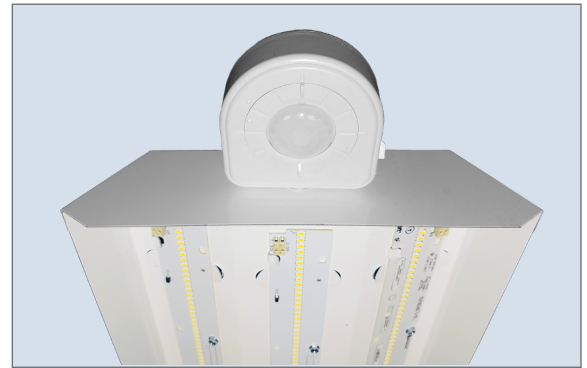


Dimming Sensors (Z221B/Z321B)

- The Wattstopper FSP sensor provides multi-level control based on motion and/or daylight contribution
- Comes pre-installed on the end cap
- Rated for cold locations
- Parameters for Bluetooth-enabled Z321B adjustable via phone app - iOS or Android
- Parameters for Z221B adjustable via wireless configuration tool (FSIR-100 - sold separately)
- Three lenses available, tailored for the ideal detection area and mounting height:
 - **L2:** 360° lens, maximum coverage 48', diameter from 8' height
 - **L3:** 360° lens, maximum coverage 40', diameter from 20' height
 - **L7:** 360° lens, maximum coverage 100', diameter from 40' height



Phone app interface for Z321B



On/Off Occupancy Sensors (ZOS)

An optional occupancy sensor controls individual fixtures on or off based on occupancy in detection zone. Sensor used: Leviton OSFHU-ITW (pictured), or an equivalent.



Finish Options (BK, SL)

In addition to the standard white finish, the PBL is also available in matte black (BK) and metallic silver (SL).

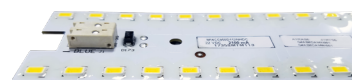
Other Options:



Cords are available in single circuit or dual circuit, 6' or 10'. Standard plug is optional, as are other NEMA configurations if specified.



Shielding Frosted acrylic diffuser lenses minimize glare and improve aesthetics.



Conformal coating Grants LED boards added protection from moisture and corrosion in more hazardous environments.



Hanging The QC hanging kit from ALP comes in 10' or 20'. Cables are pre-looped for easy installation and designed for easy fixture height adjustment. QCs come boxed with each fixture.

