



Project: _____
 Location: _____
 Cat. #: _____
 Type: _____
 Quantity: _____

LED

PBL 4W | LED High Bay

Features:

- High performance LED technology
- 0-10V dimming drivers standard on all models - dimmable to <10% on all models, with most dimmable to 1%
- DALI drivers available based on configuration
- Field replaceable LED boards and drivers through Re-boardABILITY (more info on Page 3)
- Frosted diffusers available to help minimize glare and improve aesthetics
- A wide variety of lumen packages allows for flexibility in design and helps maximize energy savings
- Multiple controls options available

Applications:

Suitable for most commercial, industrial and institutional applications

- Retail
- Warehouse
- Manufacturing
- Cold/Frozen Storage

Ambient Operating Temp.:

- -30°C to 40°C

Predicted L70 Lifetime:

- Up to 189,000 hrs (calculated)
(L70 information for specific configurations available upon request)
- For BAA compliant configurations - up to 189,000 hrs (calculated)

Construction:

- Housing and LED tray is precision brake formed from aluminum
- Pre-painted with a highly durable, highly reflective white finish

Certifications:

- UL 1598 listed for US and Canada, suitable for damp locations
- DesignLights Consortium qualified on specific configurations (refer to DLC qualified products list for exact model numbers) <http://designlights.org/>



10 YEAR
 EXTENDED
 WARRANTY
 AVAILABLE ON
 CERTAIN MODELS



Warranty:

- 5 year limited system warranty - see www.LumenFocus.com for complete warranty terms and conditions
- 10 year warranty option available on specific models
(Not available on all models. Certain conditions apply. Consult factory or sales representative for details.)



Ordering Guide:

example: PBL 4 HI UV 850 QC20 OSD C6

Series	Length	Output	Performance	Voltage	Shielding	CRI/CCT	Hanging	Controls	Options	Finish
PBL	4W									
PBL	4W 4'	LW Low	Blank Standard	UV 120-277	Blank No Lenses	835 80 CRI/3500K	Blank None	Blank No Controls	Blank No Options	Blank White
		MD Medium	HE High Efficiency (Not available in VH and SH output)	34 347V	FR Frosted Acrylic Diffusers	840 80 CRI/4000K	QC 10' Quick Hang Cable Kit	ZOS Occupancy Sensor (On/Off)	EXT10 10-Year Extended Warranty ⁽⁴⁾	BK Matte Black
		HI High		48 480V		850 80 CRI/5000K	QC20 20' Quick Hang Cable Kit	ZOSD Occupancy Sensor (On/Off/Dim)	C6 6' Single Circuit Cord	SL Metallic Silver
		VH Very High	Blank Standard				SM Surface Mount	Z221BL_ Wattstopper Programmable Photo/Motion Multi-Voltage Sensor (high/low/off) ⁽¹⁾	C65W 6' Single Circuit Cord with Low Voltage Connections	

Notes

- ⁽¹⁾ " _ " = lens type. See Page 6 for lens descriptions.
⁽²⁾ Max ceiling height for Douglas FMS sensor: 40 feet.
 See Page 5 for more details on advanced controls.
⁽³⁾ Max ceiling height for Enlighted Ruggedized sensor 50 feet.
 See Page 5 for more details on advanced controls.
⁽⁴⁾ Not available on all models. Certain conditions apply.
 Consult factory or sales representative for details.
⁽⁵⁾ EM2 - Up to 16W. 120-277V / 0°C-50°C ambient.

Controls Accessories (order separately)



For Douglas Controls

- BT-DMSW-U-A Bluetooth 1 Zone Dimmer
 BT-4BTBW-U-A Bluetooth 4-Button Wall Station
 BT-8BTBW-U-A Bluetooth 8-Button Wall Station



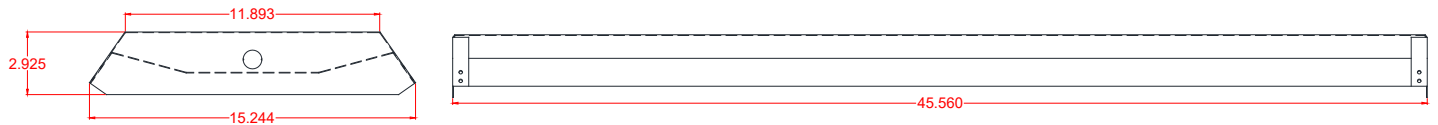
For Enlighted Controls

- WS-2-00 Enlighted Remote Control Wall Switch (for Enlighted Connected & IoT)
 WS-2-00-IL Enlighted Remote Control Wall Switch (for Enlighted One)

Z321BL_ Wattstopper Bluetooth-enabled Programmable Photo/Motion Multi-Voltage Sensor (high/low/off) ⁽¹⁾	C10 10' Single Circuit Cord
ZPC Photocell	C105W 10' Single Circuit Cord with Low Voltage Connections
ZFMS Douglas FMS Sensor with Dimming/Occupancy/Daylight Harvesting with Newtork Capabilities ⁽²⁾	D6 6' Dual Circuit Cord
ZENLO Enlighted Ruggedized Sensor with Dimming/Occupancy/Daylight Harvesting and Enlighted One System ⁽³⁾	D10 10' Dual Circuit Cord
ZENLC Enlighted Ruggedized Sensor with Dimming/Occupancy/Daylight Harvesting and Enlighted Connected System ⁽³⁾	P(NEMA) Plug (Specify NEMA configuration)
ZENLI Enlighted Ruggedized Sensor with Dimming/Occupancy/Daylight Harvesting and Enlighted IoT System ⁽³⁾	WG Wire Guard
	WGE Extended Wire Guard for End-Mounted Sensor
	SC Safety Cable
	F Fuse
	EM2 Emergency Pack ⁽⁵⁾
	SDT(480V) 480V to 277V Step Down Transformer
	CC Conformal Coating
	LVL 0-10V Dimming Leads for Easy Field Access
	BAA Buy American Act Compliant



Schematic:



Performance Chart:

Catalog #	Lumens	Watts	LPW	Catalog #	Lumens	Watts	LPW	Catalog #	Lumens	Watts	LPW
PBL 4W LW HE UV 835	27935	172	162.4	PBL 4W LW HE UV 840	28710	172	166.9	PBL 4W LW HE UV 850	29485	172	171.4
PBL 4W MD HE UV 835	34279	214	160.2	PBL 4W MD HE UV 840	35230	214	164.6	PBL 4W MD HE UV 850	36181	214	169.1
PBL 4W HI HE UV 835	38321	246	155.8	PBL 4W HI HE UV 840	39384	246	160.1	PBL 4W HI HE UV 850	40447	246	164.4
PBL 4W LW UV 835	29538	189	156.3	PBL 4W LW UV 840	30358	189	160.6	PBL 4W LW UV 850	31178	189	165.1
PBL 4W MD UV 835	34628	226	153.2	PBL 4W MD UV 840	35589	226	157.4	PBL 4W MD UV 850	36550	226	161.7
PBL 4W HI UV 835	38979	261	149.3	PBL 4W HI UV 840	40061	261	153.4	PBL 4W HI UV 850	41143	261	157.6
PBL 4W VH UV 835	50727	337	150.5	PBL 4W VH UV 840	52135	337	154.7	PBL 4W VH UV 850	53543	337	158.9

Lumen Adjustment Factors: FR lens: 0.93
WG: 0.90
FR w/ WG: 0.85

LUMENFOCUS Re-boardABILITY

The PBL features field replaceable boards and drivers. This allows you to upgrade to more efficient technology in the future. Or, in the rare event of a failure, you can rapidly replace defective components. Re-boardABILITY helps to ensure you won't get stuck with an obsolete light fixture. [Learn more about Re-boardABILITY here.](#)



[Click here for a video demonstration of the re-boarding process on a PBL.](#)

Note: Exact time varies depending on the model.



Photometric Data:

PBL 4W HI UV 835

Test No.: LLIA000621-005

Luminaire Lumens: 38,970 lm

Luminaire Watts: 304.8W

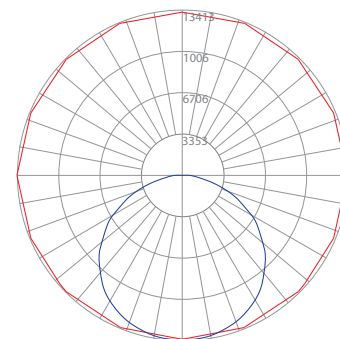
Efficacy: 127.9 LPW

Spacing Criterion (0-180): 1.32

Spacing Criterion (90-270): 1.28

Luminance Data (cd/sq.m)

Angle In Degrees	Average 0-Deg	Average 45-Deg	Average 90-Deg
45	29902	29118	29079
55	29470	28697	28730
65	27975	27414	25197
75	23601	17693	19047
85	12723	7585	8557



— Vert. Plane
— Horiz. Cone

Coefficients Of Utilization - Zonal Cavity Method

Effective Floor Cavity Reflectance 0.20

RC		80				70				50			30	
RW	70	50	30	10	70	50	30	10	50	30	10	50	30	10
0	119	119	119	119	116	116	116	116	111	111	111	106	106	106
1	109	104	100	96	106	102	98	95	98	95	92	94	91	89
2	99	91	84	78	96	89	83	77	85	80	76	82	78	74
3	90	80	71	65	88	78	70	64	75	69	63	72	67	62
4	82	70	62	55	80	69	61	54	67	59	54	64	58	53
5	76	63	54	47	74	62	53	47	59	52	46	57	51	46
6	70	56	47	41	68	55	47	41	54	46	40	52	45	40
7	65	51	42	36	63	50	42	36	49	41	36	47	40	35
8	60	47	38	32	59	46	38	32	44	37	32	43	36	32
9	56	43	34	29	55	42	34	29	41	34	29	40	33	28
10	53	39	31	26	51	39	31	26	38	31	26	37	30	26

Zonal Lumen Summary

Zone	Lumens	%Fixt
0-20	4871.84	12.50
0-30	10408.51	26.70
0-40	17189.85	44.10
0-60	31004.31	79.60
0-80	38509.13	98.80
0-90	38969.80	100.00
90-120	0.00	0.00
90-130	0.00	0.00
90-150	0.00	0.00
90-180	0.00	0.00
0-180	38969.80	100.00

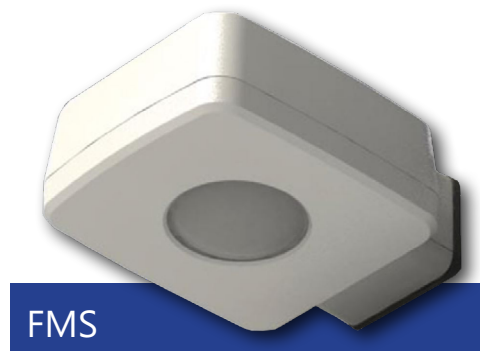
Tested in accordance with IES standards utilizing absolute photometry per LM-79-08



Douglas Lighting Controls, Inc.: Cloud-based controls

The PBL can be equipped with the Douglas FMS sensor, which is designed for high bay applications.

With a max sensor height up to 40 feet, the FMS is ideal for applications like warehouses and manufacturing facilities. It can be installed for on/off control or bi-level light functionality. The daylight sensor provides additional savings by dimming the lights to work with the amount of natural available daylight.



- Configuration from the floor via smartphone app
- Bluetooth mesh network is created between devices for control over a group of Douglas sensors
- Occupancy and daylight sensing
- IP65-rated
- 0-10V dimming
- 150 feet clear line of site, 50 feet through standard walls (distances may vary based on location and environment)

CheckLight® Energy Management System

Douglas controls can be integrated with the CheckLight® Energy Management system. This system can help you uncover energy conversion opportunities, create conservation strategies, analyze lighting load inefficiencies, and make configuration changes from anywhere with Douglas' user-friendly interface. You can get measurements, reports, and control your system from a web-based application.

CheckLight® has the capability to look at different facilities within a portfolio and use data benchmarks to compare building performances.

- Find energy conservation opportunities
- Create energy saving strategies
- Analyze load inefficiencies
- Optimize energy management

Enlighted: All-in-one sensors, upgradeable systems

Enlighted's IP65-rated Ruggedized Sensor is an all-in-one unit: task tuning, high-end trimming, daylight harvesting, and occupancy/vacancy detection. Max installation height is 50 feet.

Enlighted sensors come standard with the Enlighted One system (the "ZENLO" option). Enlighted Connected ("ZENLC") offers even more options. The Enlighted IoT ("ZENLI") option allows the full implementation of Enlighted's services. Each system can be fully upgraded to the next tier in the future. So if you start with Enlighted One but want to add energy reporting or building management systems integration in the future, you can.



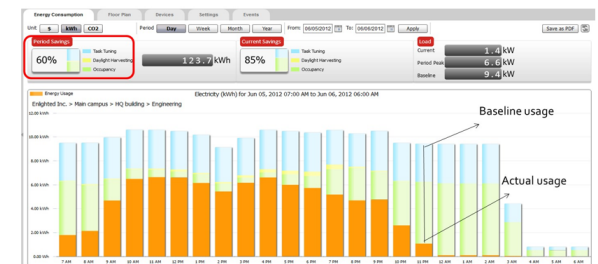
Enlighted Capabilities*	Enlighted One (ZENLO)	Enlighted Connected (ZENLC)	Enlighted IoT (ZENLI)
Motion and Switch Groups	✓	✓	✓
Daylight Harvesting	✓	✓	✓
Schedule Lighting		✓	✓
Energy Reporting & Optimization		✓	✓
Environment Data & Lighting Controls API		✓	✓
Building Management System Integration		✓	✓
Where & Space Applications			✓
Location & Occupancy APIs & Beacons			✓
Future App & API Ready			✓

Note: Additional equipment required for ZENLC and ZENLI

Real-time data analytics

Enlighted's control units compile data in real-time, which can be viewed via the Energy Manager. The Energy Manager is part of the Enlighted Connected and Enlighted IoT configurations.

- Real-time measurements and verification of energy savings
- Space analytics - data can be compiled into motion trails and heat maps
- Analyze traffic density and congestion in a space



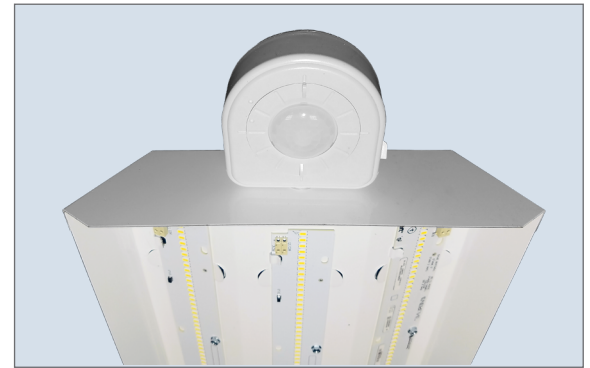
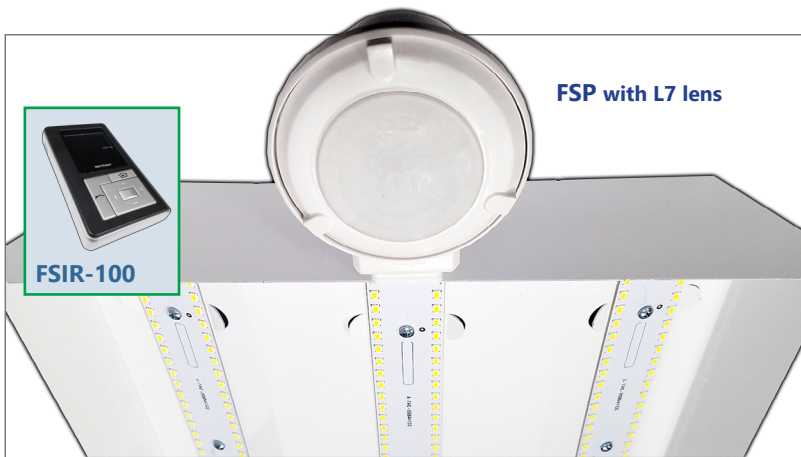
Learn more about our available advanced controls options here:

www.lumenfocus.com/controls-overview

© 2022 Enlighted for all Enlighted content and images.

© 2022 Douglas Lighting Controls, Inc. for all Douglas content and images. The Bluetooth® word, mark and logos are registered trademarks owned by the Bluetooth SIG, Inc. and any use of such marks by Douglas Lighting Controls is under license. Other trademarks and trade names are those of their respective owners.





On/Off Occupancy Sensors (ZOS)

An optional occupancy sensor controls individual fixtures on or off based on occupancy in detection zone. Sensor used: Leviton OSFHU-ITW (pictured), or an equivalent.

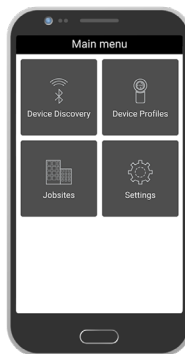


Finish Options (BK, SL)

In addition to the standard white finish, the PBL is also available in matte black (BK) and metallic silver (SL).

Dimming Sensors (Z221B/Z321B)

- The Wattstopper FSP sensor provides multi-level control based on motion and/or daylight contribution
- Comes pre-installed on the end cap
- Rated for cold locations
- Parameters for Bluetooth-enabled Z321B adjustable via phone app - iOS or Android
- Parameters for Z221B adjustable via wireless configuration tool (FSIR-100 - sold separately)
- Three lenses available, tailored for the ideal detection area and mounting height:
 - **L2:** 360° lens, maximum coverage 48', diameter from 8' height
 - **L3:** 360° lens, maximum coverage 40', diameter from 20' height
 - **L7:** 360° lens, maximum coverage 100', diameter from 40' height



Phone app interface for Z321B

Other Options:



Cords are available in single circuit or dual circuit, 6' or 10'. Standard plug is optional, as are other NEMA configurations if specified.



Shielding Frosted acrylic diffuser lenses minimize glare and improve aesthetics.



Conformal coating Grants LED boards added protection from moisture and corrosion in more hazardous environments.



Hanging The QC hanging kit from ALP comes in 10' or 20'. Cables are pre-looped for easy installation and designed for easy fixture height adjustment. QCs come boxed with each fixture.

